



# Discovery™

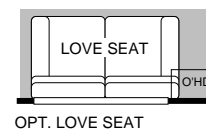
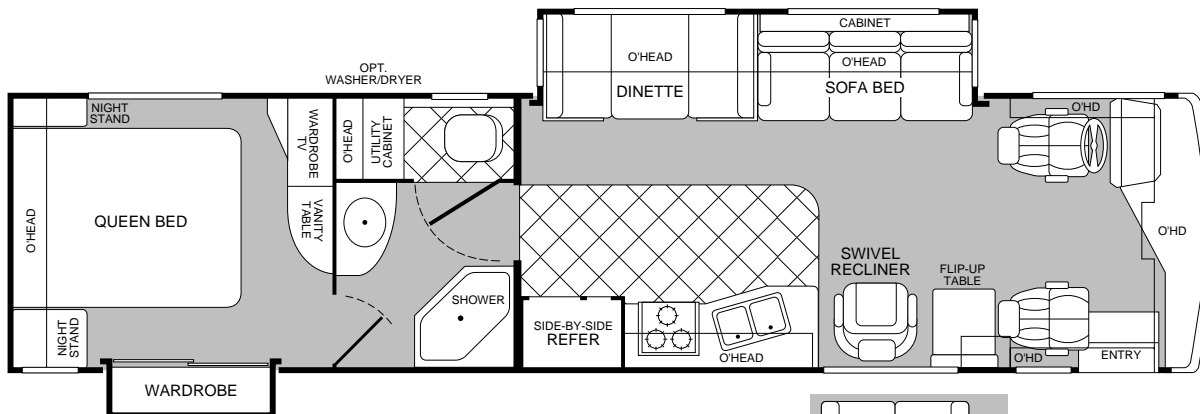
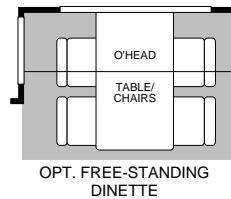
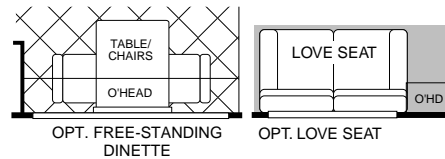
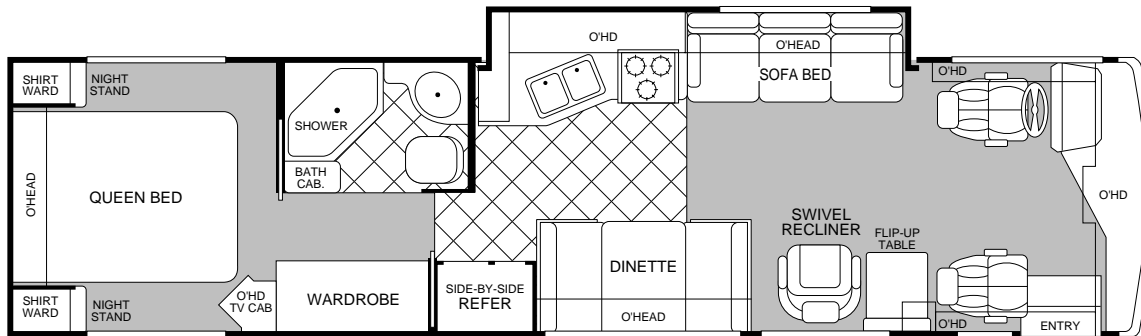
FLEETWOOD® RV

## **Every new adventure should be a Discovery.**

*When was the last time you were truly surprised? We're referring to an instance when you were honestly taken aback by something you just didn't see coming. We invite you now to take a moment and prepare yourself for the new Discovery and an encounter with a luxury motor home that hosts a combination of function, style and value that defines everything the discerning RV enthusiast requires in a Class A diesel coach. Discovery was designed with your every expectation in mind, from lengthy vacations to spontaneous weekend sojourns. An abundance of load, storage and towing capacity, plus the excellent performance and quiet comfort of its diesel chassis make Discovery the overwhelming choice for people who love to be on the road in the very best. Interpret the very best to mean a luxurious interior that extends a number of extravagant extras, from beautiful Corian® countertops, large residential porcelain sinks and beveled mirrors to a full-size, cedar-lined wardrobe. From its very first year of taking travelers to distinct and diverse destinations, Discovery has been the number one\* selling diesel motor home in America. And when you consider its manufacturer is the maker of the world's most popular motor homes, that's certainly no surprise.*

\* According to Statistical Survey Data Jan-Dec 98 C498

## 2000 Discovery Floor Plans



### MODEL 34Q

- Living Room/Galley Slide-Out
- Swivel Recliner with Flip-Up Table
- Island Queen Bed
- Optional Free-Standing Dinette
- Optional Love Seat
- Fully Enclosed Bathroom

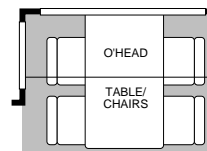
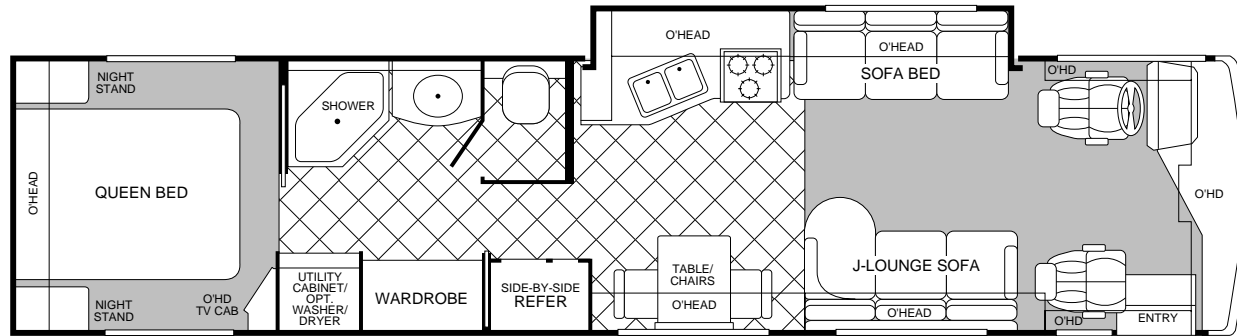
### MODEL 36T

- Living Room/Dinette Slide-Out
- Wardrobe Slide-Out
- Swivel Recliner with Flip-Up Table
- Private Toilet
- Island Queen Bed
- Vanity Table
- Optional Washer/Dryer
- Optional Free-Standing Dinette
- Optional Love Seat

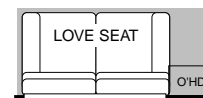
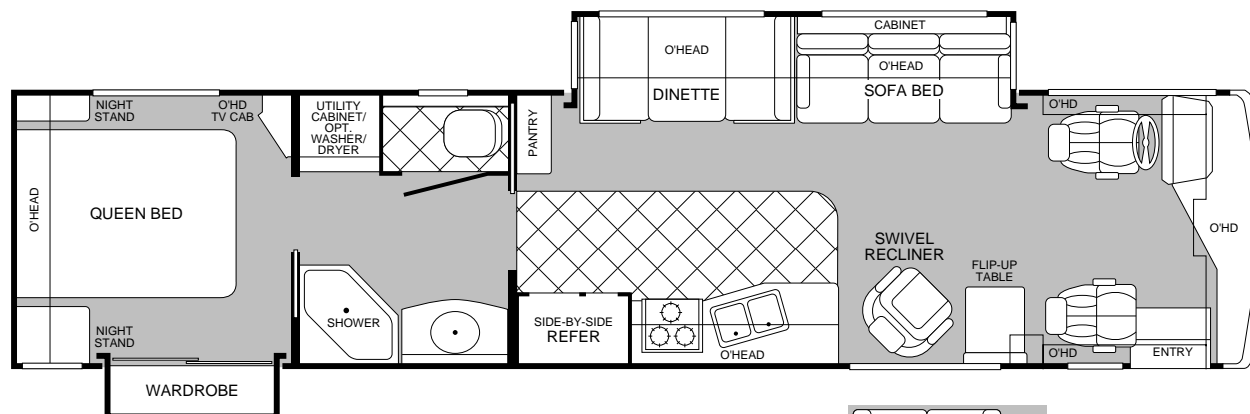
NEW FOR  
2000

## MODEL 37G

- Living Room/Galley Slide-Out
- J-Lounge Sofa
- Roomy Wardrobe and Utility Cabinet
- Optional Washer/Dryer
- Island Queen Bed
- Private Toilet



OPT. FREE-STANDING DINETTE



OPT. LOVE SEAT

## MODEL 37V

- Living Room/Dinette Slide-Out
- Swivel Recliner with Flip-Up Table
- Private Toilet
- Island Queen Bed
- Optional Free-Standing Dinette
- Optional Love Seat
- Wardrobe Slide-Out
- Optional Washer/Dryer

## 2000 Discovery Standard Features

### EXTERIOR

Fiberglass Front/Rear Cap  
Fiberglass Front Quarter Panels  
Fiberglass Rear Wheel Well Trim  
Aerodynamic Styling  
Entry Door with Deadbolt Latch  
Slider Windows Throughout  
Discovery Logo Badging  
Utility Compartment with Exterior Shower  
4-Point Manual Hydraulic Levelers  
Roof Ladder  
Exterior Assist Handle  
Remote Heated Rear View Mirror  
20' Sewer Hose  
Park Cable Receptacle  
Awning Rail/Drip Molding (Both Sides)  
Power Entry Step  
Dual Battery Charge Control  
Porch Light  
3 Colorway Graphics to Match Decor  
Lower Body Accent Paint

### EXTERIOR AUTOMOTIVE

Large Curved Aerodynamic Windshield  
Undercoating  
Stainless Steel Wheel Simulators  
Valve Extenders  
Underhood Utility Light  
Steel Surface on Bulkhead  
Trailer Hitch with 7-Point Electrical Hook-Up  
Large Single Headlamps with Turn Signal  
Rear Vision Camera  
Single Motor Windshield Wipers with Wet Arm  
Mud Flaps  
Fog Lamps

### BODY STRUCTURE

Vacubond Upper/Lower Floor  
Vacubond Walls with Smooth Exterior Fiberglass  
Radiused Roof with Ducted A/C  
Rubber Roof  
Steel Floor/Wall/Ceiling Framing

### PLATFORM CONSTRUCTION

Basement Floor Configuration  
Heated Water & Holding Tank Compartments  
Polyethylene Luggage Compartment Boxes  
Steel Truss System

### INTERIOR LIGHTING

Wardrobe Lighting  
Fluorescent Lighting  
Decor Lighting  
Incandescent Lighting  
Wall Sconces  
Make-Up Lights in Bath

### EXTERIOR STORAGE

Insulated Luggage Doors  
Single-Paddle/Metal Latches  
Continuous One-Piece Bulb Seal  
Hidden, Stainless Steel Latch Rods  
Hidden Lift Strut Supports (one per door)  
Lighted Compartments  
Rotomolded Compartments  
Steel Seal Frames

### ELECTRICAL

Doorside Patio Receptacle  
120V/12V AC/DC Converter with 1000 Watt Inverter  
Central Electrical Panel  
120V/12V Wire Raceway  
3-Way Water Pump Switch  
6.5KW Generator  
30-amp Service  
Wall Switches  
ECC Climate Control  
Dual 6V/Deep-Cycle 218-amp House Batteries

### INTERIOR

3 Interior Decors  
Skylight In Tub/Shower  
Glass Shower Door with Bright Brass Frame  
Alder with Cherry Finish Wood Grain  
Printed Plush Wall-to-Wall Nylon Carpet w/Carpet Pad  
Wood Drawers  
Roller Guide Drawer Slides with Transit Ship Locks  
Radius Corner Cabinetry  
Brass Finished Cabinet Hardware  
Mini Blinds (Metal)  
Bedspread with Decor Pillows  
Pillow Top Innerspring Mattress  
Hardwood Cabinet Doors & Drawers  
Corian® Countertops in Galley & Lavy  
Crown Molding  
Laminate Floor Tile in Galley & Bath  
Headboard  
Beveled Mirrors  
Slide-Out Dinette Bins with Locks  
Window Coverings  
Wainscot Paneling in Bedroom  
Hardwood Bath Door/Trims  
Wood Trim Table Tops (Dinette & Nightstands)  
Trash Basket in Galley  
Molded Tub/Shower with One-Piece Enclosure  
Bright Brass Bath Accessories  
Residential Seat Styling  
Entry Rail  
Hardwood Raised Panel Cabinet Doors  
Adjustable Cabinet Shelves (Selected Cabinets)  
Sink Cutting Board  
Solid Divider Doors  
Large Double Porcelain Sink in Galley  
Porcelain Bowl in Lavy  
J-Lounge Sofa (37G only)

### APPLIANCES

27" Panasonic® Stereo TV in Front Overhead  
Rear 13" Panasonic® TV  
Hi-Fi VCR  
Smoke Detector  
LP Detector  
CO Detector  
20M BTU/25M (Dual) Furnace  
10-Gallon, Quick-Recovery Water Heater with D.S.I.  
22" 3 Burner, High-Output Cook Top  
Light/Power Range Hood & Monitor Panel  
Folding Range Cover  
Dual Roof A/C High Efficiency w/Solar Panel on Front A/C  
Water Heater Bypass  
Battery-Operated Wall Clock  
Porcelain Toilet with Water Saver  
Toilet Tank "Sani-flush" System  
Convection Microwave  
12-cu.ft. Dometic® Side-by-Side Refrigerator  
Single-Lever Galley Faucet  
Water Filter with Faucet  
Demand Water Pump with Filter  
Power Bath Vent  
TV Antenna  
Fantastic® Power Roof Vent  
Fire Extinguisher  
Telephone Jack in Dash  
Rear Speakers in Bedroom

### INTERIOR AUTOMOTIVE

Intermittent Wiper Control  
Multi-Function Sun Visors  
Cruise Control  
Radio with Cassette AM/FM/MX—Electronic Tuning  
Auxiliary Start Circuit  
Battery Shut Off Switch  
Auto A/C Heater Combo  
Radio Switch—Main/Auxiliary  
Soft Surface Automotive Dash  
Driver/Passenger Captain's Chairs  
with Reclining Back/Slide Controls  
Dash Fans  
Tilt Steering Wheel  
3-Point Seat Belts on Driver/Passenger Seats

*Product information and photography included in this brochure were as accurate as possible at the time of publication. For the most current product information and changes, please visit our Website at [www.fleetwood.com](http://www.fleetwood.com) or contact your local Fleetwood dealer. Subsequent refinements may be evident in the actual product. Prices and specifications are subject to change without notice. All fuel and liquid capacities are approximate and dimensions are nominal. Fleetwood has designed its motor home brands to provide a variety of potential uses for its customers. Each unit features the optimum storage, fluid, seating and sleeping capabilities. Though the customer enjoys this potential, he/she also has the responsibility to select the proper combinations of loads without exceeding the chassis weight capacities.*

## New Discovery Features For 2000

*Our engineering may set us apart from the rest. But the things you'll notice most, when you and your family take a trip, are the top-of-the-line features. This year we have, once again, added to an already large list of features with the following:*

- 27" Panasonic® Color Stereo TV
- Optional Central Vacuum
- Optional Rear Cap Mural
- 10-Gallon Water Heater
- Toilet Tank "Sani-flush" System
- Optional Home Theater Sound System
- Optional 2000 Watt Inverter



## 2000 Discovery Options

EXTERIOR	34Q	36T	37G	37V
Awning—USA	Opt	Opt	Opt	Opt
Front Mask	Opt	Opt	Opt	Opt
Mural—Desert	Opt	Opt	Opt	Opt
Mural—Island	Opt	Opt	Opt	Opt
Mural—Eagle	Opt	Opt	Opt	Opt
Mural—Tiger	Opt	Opt	Opt	Opt
Mural—USA Flag	Opt	Opt	Opt	Opt
Aluminum Rim—Class A's	Opt	Opt	Opt	Opt

INTERIOR AUTOMOTIVE	34Q	36T	37G	37V
CB Radio Ready	Opt	Opt	Opt	Opt
Stereo AM/FM with CD Player	Opt	Opt	Opt	Opt
Power Seat—Driver	Opt	Opt	Opt	Opt
Leather Driver/Passenger Seats with Power Driver	Opt	Opt	Opt	Opt

INTERIOR	34Q	36T	37G	37V
Leather J-Lounge Sofa	N/A	N/A	Opt	N/A
Leather Sofa Bed	Opt	Opt	Opt	Opt
Leather Swivel Recliner	Opt	Opt	N/A	Opt
Free-Standing Dinette Table with Extension & Chairs	Opt	Opt	N/A	Opt
Day/Night Pleated Shades	Opt	Opt	Opt	Opt
Cedar Lining in Wardrobe	N/A	Opt	N/A	Opt
Multiple CD Changer	Opt	Opt	Opt	Opt
Home Theater Sound	Opt	Opt	Opt	Opt
Walnut Wood Grain	Opt	Opt	Opt	Opt
Love Seat	Opt	Opt	N/A	Opt

SLIDE-OUT	34Q	36T	37G	37V
Galley—Galley/Sofa	Std	N/A	Std	N/A
Living Room—Dinette/Sofa	N/A	Std	N/A	Std
Bedroom Wardrobe—Closet/Organizer	N/A	Std	N/A	Std

SLEEPING ACCOMMODATIONS (STANDARD)	34Q	36T	37G	37V
Sofa Bed	46"x 68"	46"x 68"	46"x 68"	46"x 68"
Dinette	39"x 74"	39"x 74"	N/A	39"x 74"
Queen Bed	60"x 80"	60"x 80"	60"x 80"	60"x 80"

APPLIANCES	34Q	36T	37G	37V
Range 3-Burner Drop-In	Opt	Opt	Opt	Opt
Washer/Dryer	N/A	Opt	Opt	Opt
Central Vacuum System	Opt	Opt	Opt	Opt
DSS Manual Lift/Satellite Dish	Opt	Opt	Opt	Opt

ELECTRICAL	34Q	36T	37G	37V
7.5kW "Quiet" Onan® Diesel Generator	Opt	Opt	Opt	Opt
CSA Package	Opt	Opt	Opt	Opt

## The Power Platform II Makes The Difference

Discovery's quality begins long before the features come on board.

We begin by building on our exclusive Power Platform II, a unique truss design welded together using tubular steel that's durable, strong, and dependable.

The result is a quiet, nearly flawless ride and increased floor strength.

An all-steel foundation further reduces stress loads on the sidewalls and minimizes chassis flex on uneven roads.

## Features for the 2000 Discovery

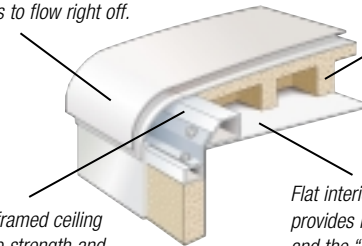
For 2000, Discovery offers an abundance of practical, user-friendly exterior features that make the motor home lifestyle convenient and highly stylized. Discovery's new one-piece fiberglass front cap and lower fascia smoothly reduce drag and noise, and set off an expansive view-enhancing, automotive-bonded windshield. Vacubonded ceiling, walls and floor offer maximum protection from the elements, structural durability, and an aerodynamic appeal. Discovery's domed roof and flat ceiling improves strength, allows optimum insulation while affording an interior residential feeling.

The curved exterior roof is an aerodynamic design, and allows the elements to flow right off.

Molded foam provides a roof radius and insulation.

A steel-framed ceiling gives the strength and support needed for years of trouble-free use.

Flat interior ceiling provides more headroom and the "at home" feeling you expect from a Fleetwood RV.



## 2000 Discovery Specifications



FREIGHTLINER CHASSIS	34Q	36T	37G	37V
Engine CID	5.9L	5.9L	5.9L	5.9L
Wheel Base	208"	228"	242"	242"
GVWR lbs/kgs (1)	26,350/11,952	26,350/11,952	26,350/11,952	26,350/11,952
Front GAWR lbs/kgs (2)	9,350/4,241	9,350/4,241	9,350/4,241	9,350/4,241
Rear GAWR lbs/kgs (2)	17,000/7,711	17,000/7,711	17,000/7,711	17,000/7,711
Base Weight lbs/kgs (3)	18,700/8,482	19,420/8,809	N/A	20,330/9,220
GCWR lbs/kgs (4)	31,350/14,220	31,350/14,220	31,350/14,220	31,350/14,220
Hitch Rating/Tongue Weight lbs	5,000/500	5,000/500	5,000/500	5,000/500
Hitch Rating/Tongue Weight kgs	2,268/227	2,268/227	2,268/227	2,268/227
Fuel Capacity gal/lbs	90/630	90/630	90/630	90/630
Fuel Capacity gal/kgs	90/286	90/286	90/286	90/286

1. GVWR (Gross Vehicle Weight Rating): Means the maximum permissible weight of this motor home. The GVWR is equal to or greater than the sum of the unloaded vehicle weight plus the net carrying capacity.

2. GAWR (Gross Axle Weight Rating): Means the maximum permissible loaded weight a specific axle is designed to carry.

3. Base Weight: Means the weight of the motor home without fuel, options, water, cargo, or passengers.

4. GCWR (Gross Combination Weight Rating): Means the value specified by the motor home manufacturer as the maximum allowable loaded weight of this motor home with its towed trailer or towed vehicle. Towing and braking capacities may differ. Refer to Fleetwood and chassis manufacturer manuals for complete information.



DIMENSIONS	34Q	36T	37G	37V
Overall Length	34' 9"	36' 9"	37' 9"	37' 9"
Overall Height with A/C	12' 1"	12' 1"	12' 1"	12' 1"
Overall Width (maximum)	102"	102"	102"	102"
Interior Height (maximum)	79"	79"	79"	79"
Interior Width (maximum)	96"	96"	96"	96"

STORAGE CAPACITY (CU.FT.)	34Q	36T	37G	37V
Exterior	84	97	105	107

LIQUID CAPACITIES (GALLONS/LITERS)	34Q	36T	37G	37V
Fresh Water	100/378	100/378	100/378	100/378
Water Heater	10/38	10/38	10/38	10/38
Body-Waste Holding	50/189	50/189	50/189	50/189
Grey-Water Holding	50/189	50/189	50/189	50/189
Appliance LPG Tank (wc/see note)	25/95	25/95	25/95	25/95

Note: Tank manufacturer's listed water capacity (wc). Actual filled LP capacity is 80% of listing due to safety shutoff required on tank.

**FLEETWOOD® RV**

Fleetwood Enterprises, Inc.  
RV Marketing  
P.O. Box 7638  
Riverside, CA 92513-7638



Your local Fleetwood RV dealer is:

TO FIND A FLEETWOOD DEALER near you, call 24 hours a day at 1-800-444-4905 or visit our Website at [www.fleetwood.com](http://www.fleetwood.com)

FOR CUSTOMER ASSISTANCE, call toll free 24 hours a day at 1-800-322-8216, visit our Website, or you may write to Fleetwood Enterprises, Inc., P.O. Box 7638, Riverside, CA 92513-7638.

Product information and photography included in this brochure were as accurate as possible at the time of publication. For the most current product information and changes, please visit our Website at [www.fleetwood.com](http://www.fleetwood.com) or contact your local Fleetwood dealer. Subsequent refinements may be evident in the actual product. Prices and specifications are subject to change without notice. All fuel and liquid capacities are approximate and dimensions are nominal. Fleetwood has designed its motor home brands to provide a variety of potential uses for its customers. Each unit features the optimum storage, fluid, seating and sleeping capabilities. Though the customer enjoys this potential, he/she also has the responsibility to select the proper combinations of loads without exceeding the chassis weight capacities.

© 1999 Fleetwood Enterprises, Inc.

Inventory Control Number 660002/2nd Edition 12/99



This award certifies that Fleetwood has met Ford's rigid quality standards for modifying a Ford chassis.