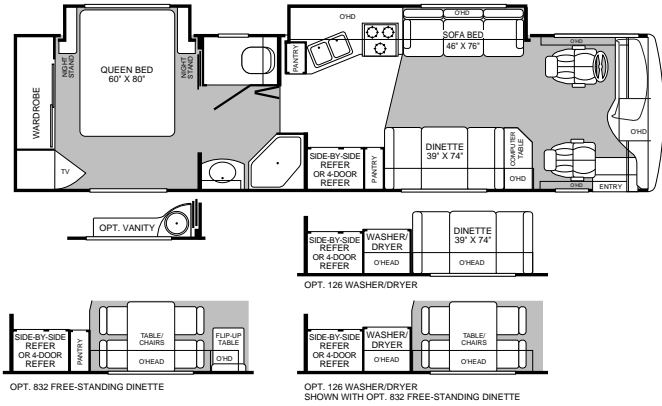
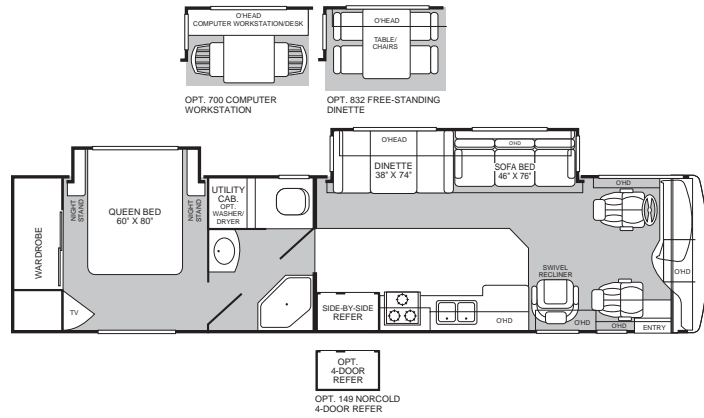




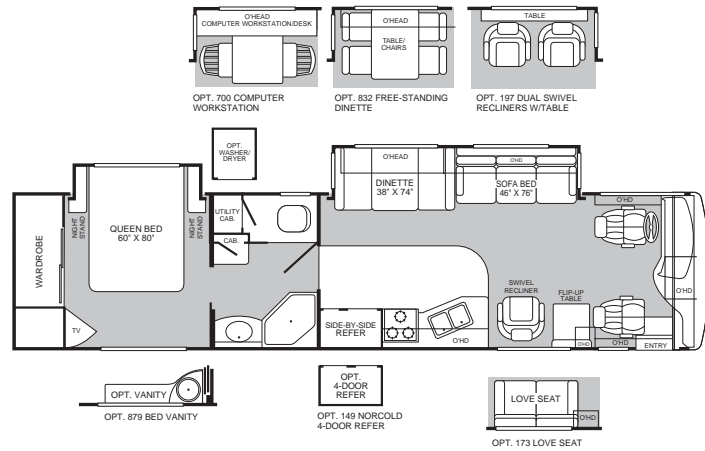
Discovery®



Model 35M

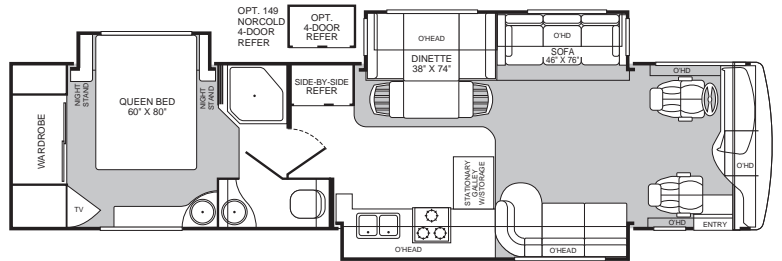
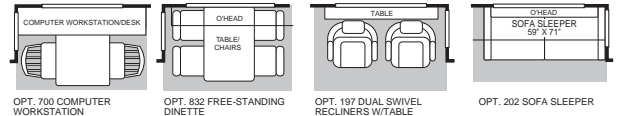
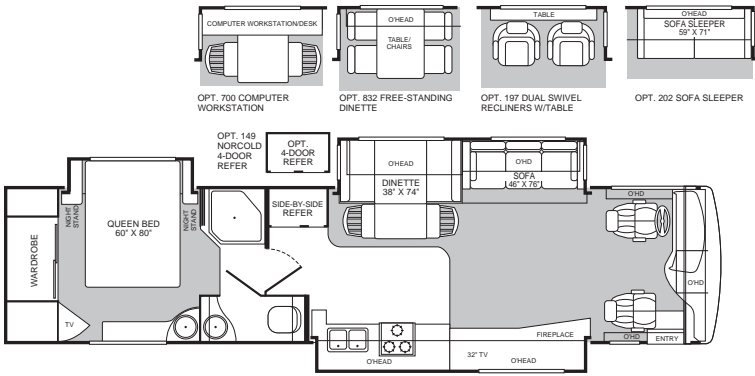


Model 38T

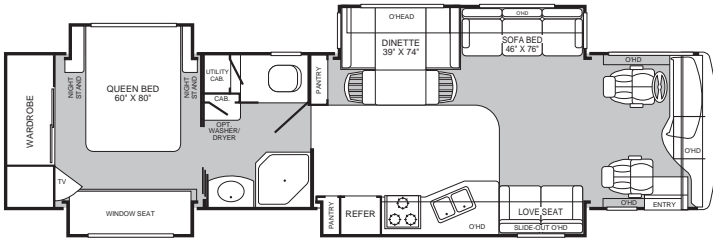
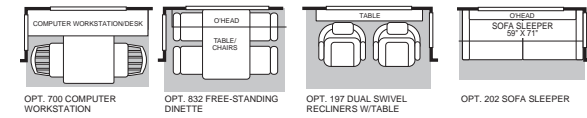


Model 38U

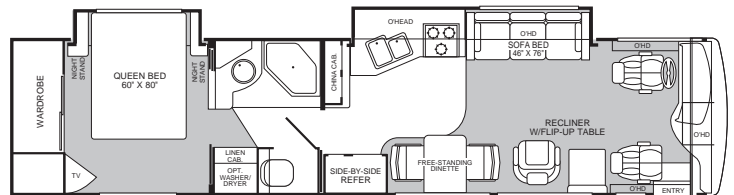
Model 39C



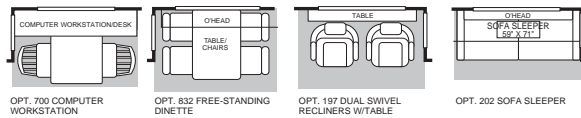
Model 39J



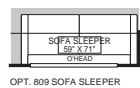
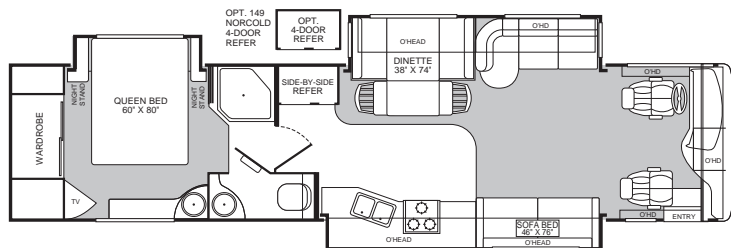
Model 39L



Model 39P



Model 39S



Standard Features

Appliances

- Front 27" Panasonic® Stereo TV in Overhead
- Rear 20" Panasonic® TV
- Hi-Fi VCR
- Smoke Detector/Alarm
- LPG Detector/Alarm
- CO Detector/Alarm
- 20,000 BTU/25,000 (Dual) Furnace
- 32,000 BTU (35M Model Only)
- 10-Gallon, Quick-Recovery Water Heater with D.S.I. (Gas/Electric)
- 3-Burner, High-Output Cooktop w/Sealed Burners
- Light/Power Range Hood (Integrated into Microwave)
- Monitor Panel in Front Overhead
- Solid Surface Range Cover
- Dual Roof A/C High Efficiency w/Solar Panel on Front A/C
- Water Heater Bypass System
- Porcelain Toilet with Water Saver
- Toilet Tank San-T-Flush™ System
- 1.4-cu. ft. GE® Convection Microwave
- 12-cu. ft. Side-by-Side Dometic® Refrigerator
- Single-Lever Galley Faucet with Retractable Wand
- Water Filter with Faucet
- Demand Water Pump with Filter
- TV Antenna
- Fan-Tastic® Power Roof Vent – Galley and Bath
- Fire Extinguisher
- Telephone Jack in Living Area and Bedroom
- Rear Speakers in Bedroom
- Coffeemaker

Body Structure

- Vacubond Upper/Lower Floors
- Vacubond Walls with Smooth High-Gloss Exterior Fiberglass
- Radius Roof with Ducted A/C
- Royal Tuff-Ply™ Roof
- Aluminum Interlocking Floor/Wall/Ceiling Framing

Electrical

- Doorside Patio Receptacle
- 120V/12V AC/DC Converter with 2000-Watt Inverter
- Central Electrical Panel
- 120V/12V Wire Raceways
- 3-Way Water Pump Switch
- 7.5kW Onan® Quiet Diesel Generator
- 50-amp Service
- Wall Switches
- EMS – Energy Management System
- Four 6V/Deep-Cycle 218-amp House Batteries

Exterior

- Fiberglass Front/Rear Cap
- Fiberglass Front Quarter Panels
- Fiberglass Rear Wheel Well Trim
- Aerodynamic Styling

Exterior (cont.)

- Roof Mounted Chrome Air Horns
- DSS Satellite Dish (Manual)
- Entry Door with Deadbolt Latch
- Slider Windows
- Torque Windows in Bedroom
- Utility Compartment with Exterior Shower
- 4-Point Manual Hydraulic Levelers
- Roof Ladder
- Lighted Exterior Entry Assist Handle
- Remote Heated Rear View Mirrors
- 20' Sewer Hose
- Park Cable Receptacle
- Awning Rail/Drip Molding (Both Sides)
- Power Entry Step
- Dual Battery Charge Control
- Porch Light
- 3 Colorway Painted Graphics to Match Decor
- Manual Patio and Entry Awning

Exterior Automotive

- Large, Aerodynamic Bonded in Windshield
- Undercoating
- Aluminum Wheels
- Valve Extenders
- Underhood Utility Light
- Steel Surface on Bulkhead
- Trailer Hitch with 7-Point Electrical Hook-Up*
- Large Headlamps with Turn Signal
- Rear Vision Camera
- Single Motor Windshield Wipers with Wet Arm
- Mud Flaps
- Fog Lamps
- Freightliner® Chassis
- 330 HP Caterpillar® Engine

Exterior Storage

- Insulated Aluminum Luggage Doors
- Single-Paddle/Metal Latches
- Continuous One-Piece Bulb Seal
- Hidden, Stainless Steel Latch Rods
- Hidden Lift Strut Supports
- Lighted Compartments
- Rotomolded Compartments
- EZ Store™ on Slide-Outs

Interior

- 3 Interior Decors
- Skylight in Tub/Shower
- Glass Shower Door
- Cherry Finish Wood Grain
- Printed Plush Wall-to-Wall Carpet w/Carpet Pad
- Wood Drawers
- Roller Guide Drawer Slides with Transit Ship Locks
- Cedar Lining in Wardrobe
- Radius Corner Cabinetry
- Coordinated Cabinet Hardware

Interior (cont.)

- Pleated Day/Night Shades
- Bedspread with Decor Pillows
- Lighted Entry Assist Handles
- Restonic® Pillow Top Innerspring Mattress
- Hardwood Cabinet Doors & Drawers
- Solid Surface Countertops in Galley & Lavy
- Crown Molding
- Laminate Floor Tile in Galley & Bath
- Beveled Mirrors
- Slide-Out Dinette Bins with Locks
- Hardwood Bath Door/Trims
- Wood Trim Table Tops (Dinette & Nightstands)
- Trash Basket in Galley
- Molded Tub/Shower with One-Piece Enclosure
- Coordinated Bath Accessories
- Residential Seat Styling
- Hardwood Raised-Panel Cabinet Doors
- Adjustable Cabinet Shelves (Selected Cabinets)
- Sink Covers
- Solid Divider Doors
- Large, Double Porcelain Sink in Galley
- Porcelain Bowl in Lavy (Some Models)
- J-Lounge Sofa (Some Models)
- Solid Surface Lavy Sinks (Some Models)

Interior Automotive

- Intermittent Wiper Control
- Multi-Function Sun Visors
- Cruise Control
- AM/FM/CD Radio
- Auxiliary Start Circuit
- Battery Shut-Off Switch
- Auto A/C Heater Combo
- Radio Switch–Main/Auxiliary Power
- Soft-Surface Automotive Dash
- Driver/Passenger Captain's Chairs with Reclining Back/Slide Controls
- Dash Fans
- Tilt/Telescoping Steering Wheel
- 3-Point Seat Belts on Driver/Passenger Seats

Interior Lighting

- Wardrobe Lighting
- Fluorescent Lighting
- Decor Lighting
- Incandescent Lighting
- Wall Sconces
- Make-Up Lights in Bath
- Bedroom Lighting

Platform Construction

- Basement Floor Configuration
- Heated Water & Holding Tank Compartments
- Polyethylene Luggage Compartment Boxes
- Power Platform
- Coach Vibration Isolators

* The chassis manufacturer recommends the installation of a supplemental brake control system to activate the brakes on the vehicle or trailer you are towing.

Specifications

Freightliner® Chassis	35M	38T	38U	39C	39J	39L	39P	39S
Engine Liters	7.2L	7.2L	7.2L	7.2L	7.2L	7.2L	7.2L	7.2L
Wheelbase	208"	242"	242"	252"	252"	252"	252"	252"
GVWR (lbs) (1)	27,910	27,910	27,910	27,910	27,910	27,910	27,910	27,910
Front GAWR (lbs) (2)	10,410	10,410	10,410	10,410	10,410	10,410	10,410	10,410
Rear GAWR (lbs) (2)	17,500	17,500	17,500	17,500	17,500	17,500	17,500	17,500
Base Weight (lbs) (3)	21,255	21,555	21,555	22,605	22,605	22,900	21,755	22,605
GCWR (lbs) (4)	32,910	32,910	32,910	32,910	32,910	32,910	32,910	32,910
Hitch Rating (lbs)*	5,000	5,000	5,000	5,000	5,000	5,000	5,000	5,000
Tongue Weight (lbs)*	500	500	500	500	500	500	500	500
Fuel Capacity (gal)	90	90	90	90	90	90	90	90

Dimensions and Capacities								
Overall Length (5)	35' 4"	38' 2"	38' 2"	39' 0"	39' 0"	39' 0"	39' 0"	39' 0"
Overall Height (with A/C)	12' 3"	12' 3"	12' 3"	12' 3"	12' 3"	12' 3"	12' 3"	12' 3"
Overall Width (maximum) (6)	102"	102"	102"	102"	102"	102"	102"	102"
Interior Height (maximum)	79"	79"	79"	79"	79"	79"	79"	79"
Interior Width (maximum)	96"	96"	96"	96"	96"	96"	96"	96"
Fresh Water Holding Tank (gal)	86	86	86	86	86	86	86	86
Grey Water Holding Tank (gal)	50	50	50	50	50	50	50	50
Black Water Holding Tank (gal)	50	50	50	50	50	50	50	50
Appliance LPG Tank (gal) (WC) (7)	38	38	38	38	38	38	38	38
Water Heater Tank (gal)	10	10	10	10	10	10	10	10

Liquid Weight Reference	Water (gal) = (8.3 lbs/3.8 kgs)	Fuel (gal) = (7.1 lbs/3.2 kgs)	LPG (gal) = (4.2 lbs/1.9 kgs)
Metric Conversion	Multiply pounds x 0.453 to obtain kilograms		Multiply gallons x 3.785 to obtain liters

- GVWR (Gross Vehicle Weight Rating): Means the maximum permissible loaded weight of the motor home. The GVWR is equal to or greater than the sum of the unloaded vehicle weight plus the net carrying capacity.*
 - GAWR (Gross Axle Weight Rating): Means the maximum permissible loaded weight a specific axle is designed to carry.*
 - Base Weight: Means the estimated weight of the motor home without fuel, options, water, cargo or passengers.*
 - GCWR (Gross Combined Weight Rating): Means the value specified by the motor home manufacturer as the maximum allowable loaded weight of this motor home with its towed vehicle. Towing and braking capacities may differ. Refer to Fleetwood and chassis manufacturer manuals for complete information.*
 - Length taken from front bumper to rear bumper (excludes accessories).*
 - Excludes safety equipment and awnings.*
 - Tank Manufacturer's listed water capacity (WC). Actual LPG capacity is 80% of water listing as required by the safety code.*
- * *The chassis manufacturer recommends the installation of a supplemental brake control system to activate the brakes on the vehicle or trailer you are towing.*

IMPORTANT—PLEASE READ: Product information, photography and illustrations included in this publication were as accurate as possible at the time of printing. For further product information and changes, please visit our website at www.fleetwoodrv.com or contact your local Fleetwood dealer. Prices, materials, design and specifications are subject to change without notice. All weights, fuel, liquid capacities and dimensions are approximate. Fleetwood has designed its recreational vehicles to provide a variety of uses for its customers. Each vehicle features optimal seating, sleeping, storage and fluid capacities. The user is responsible for selecting the proper combination of loads (i.e. occupants, equipment, fluids, cargo, etc.) to ensure that the vehicle's capacities are not exceeded.

Options

Appliances	35M	38T	38U	39C	39J	39L	39P	39S
3-Burner Range with Oven	OPT	OPT	OPT	OPT	OPT	OPT	OPT	OPT
Washer/Dryer	OPT	OPT	OPT	OPT	OPT	OPT	OPT	OPT
Central Vacuum System	OPT	OPT	OPT	OPT	OPT	OPT	OPT	OPT
DSS Auto Locating/Satellite Dish (Covered)	OPT	OPT	OPT	OPT	OPT	OPT	OPT	OPT
Norcold® 4-Door Refrigerator with Ice Maker	OPT	OPT	OPT	OPT	OPT	OPT	OPT	OPT
Electrical								
CSA Package	OPT	OPT	OPT	OPT	OPT	OPT	OPT	OPT
Exterior								
Awning—USA (Power)	OPT	OPT	OPT	OPT	OPT	OPT	OPT	OPT
Front Mask	OPT	OPT	OPT	OPT	OPT	OPT	OPT	OPT
Spotlight with Remote Control	OPT	OPT	OPT	OPT	OPT	OPT	OPT	OPT
Interior Automotive								
Stereo AM/FM with CD-Cassette	OPT	OPT	OPT	OPT	OPT	OPT	OPT	OPT
Stereo AM/FM with 6 Disk CD	OPT	OPT	OPT	OPT	OPT	OPT	OPT	OPT
Interior								
Bedroom Radio	OPT	OPT	OPT	OPT	OPT	OPT	OPT	OPT
Ultraleather™ J-Lounge Sofa	N/A	N/A	OPT	N/A	OPT	N/A	N/A	OPT
Ultraleather™ Sofa Bed	OPT	OPT	OPT	OPT	OPT	OPT	OPT	OPT
Ultraleather™ Sofa Sleeper	N/A	OPT	OPT	OPT	OPT	OPT	N/A	OPT
Ultraleather™ Swivel Recliner (Free-Standing)	N/A	OPT	OPT	N/A	N/A	OPT	OPT	N/A
Ultraleather™ Passenger Seat with Power Foot Rest	OPT	OPT	OPT	OPT	OPT	OPT	OPT	OPT
Ultraleather™ Love Seat	N/A	N/A	OPT	N/A	N/A	N/A	OPT	N/A
Free-Standing Dinette with Chairs	OPT	OPT	OPT	OPT	OPT	OPT	STD	OPT
Panasonic® 5-Disc DVD Home Theater Sound System	OPT	OPT	OPT	OPT	OPT	OPT	OPT	OPT
Computer Workstation at Dinette	N/A	OPT	OPT	OPT	OPT	OPT	N/A	OPT
3-Burner Sealed Drop-In Range with Oven	OPT	OPT	OPT	OPT	OPT	OPT	OPT	OPT
Power Sunvisors	OPT	OPT	OPT	OPT	OPT	OPT	OPT	OPT
Bedroom Dresser with 2nd Sink	OPT	N/A	OPT	STD	STD	N/A	OPT	STD
Ultraleather™ Dual Free-Standing Recliners	N/A	N/A	OPT*	OPT	OPT	OPT	N/A	OPT

N/A: Some options not available on all models. See your dealer for complete information.

* Must add love seat option on this model.

Why would you buy anything else?

For every road you travel, Fleetwood has the RV to fit your high standards and lifestyle. We build the recreational vehicles America wants, accounting for nearly one out of every three RVs on the road today. How do we do it? We call it the **Fleetwood Equation**.

Size + Service + Quality = Value!

Size

The world's #1 RV manufacturer

Over the past half-century Fleetwood has grown to become the largest manufacturer of recreational vehicles in the world.

Fleetwood remains, year after year, the largest, most influential, innovative and recognized leader in the RV industry.

Service

Listening to our customers

With over 1,100 service dealers in the US and Canada, Fleetwood has the largest network in the RV industry. No other RV company comes close to equaling this vital customer support system. Fleetwood RV service dealers have instant, real-time electronic access to your service records as well as parts inventory and warranty repair authorization inquiries. We also provide a customer call center for service and product information so no matter where you travel in North America, professional support and fast answers are always nearby. Call toll free: 1-800-322-8216.



Quality

Using only the best materials

At Fleetwood, quality begins at the design stage so every coach is built right, right from the start. Subsequent to design approval, full-functioning prototypes are built, then punished on a test track and subjected to accelerated life cycle tests where a few weeks can equal years of normal use. At the same time, components and systems are test-cycled thousands of times assuring years of problem-free use. Once approved for production, each unit is built by skilled technicians using quality materials and components, many of which are sourced through, or manufactured by, our subsidiary companies such as Gold Shield Fiberglass and Continental Lumber Products.



Fleetwood engineers specify the very best products and appliances from companies such as Coleman, Dometic, Flexsteel, Ford, Freightliner, Magic Chef, Panasonic, and Workhorse. These companies are experts in their respective fields and play a significant role as partners, not just suppliers.

All this assures that every Fleetwood RV has the fit, finish and details required by our high standards—as well as yours.

Value

Priced right with style

At Fleetwood RV, we look at value as the sum of everything we offer.

- Value is our design, engineering expertise, and innovative manufacturing methods.
- Value is structures and components that are the best in the industry, that meet or exceed government and industry safety standards.
- Value is Ownercare—a one-year/three-year warranty with coverage from a company that will be around in the future to service your needs. Ownercare is one of the RV industry's most comprehensive programs and includes systems and applications, construction, no deductible and no service charge. And it is fully transferable for the first 12 months. See your nearest Fleetwood dealer for a full explanation of benefits and restrictions.
- Value is customer satisfaction. When asked, more experienced RV owners would recommend Fleetwood to a friend than any other brand. Fleetwood RVs consistently hold their value better than most RVs at trade-in time.



Value is peace of mind.

SSQV—Size, Service, Quality, and Value. Together they equate to the very best RV you can buy, and the reason you should purchase a Fleetwood over any other brand.

Require these features when you purchase your next RV... Fleetwood does!

See you on the road!

FLEETWOOD RV
America's Favorite RV!

Fleetwood Enterprises, Inc. • RV Marketing • P.O. Box 7638 • Riverside, CA 92513-7638

Your local Fleetwood RV dealer is:



Join Now!
(877) 577-2560

www.fleetwoodrv.com

Visit our website to find a dealer near you or learn more about other Fleetwood products. Or call 1-800-444-4905.

FOR CUSTOMER ASSISTANCE, call toll free at 1-800-322-8216, visit our website, or you may write to Fleetwood Enterprises, Inc., P.O. Box 7638, Riverside, CA 92513-7638.

IMPORTANT—PLEASE READ: Product information, photography and illustrations included in this publication were as accurate as possible at the time of printing. For further product information and changes, please visit our website at www.fleetwoodrv.com or contact your local Fleetwood dealer. Prices, materials, design and specifications are subject to change without notice. All weights, fuel, liquid capacities and dimensions are approximate. Fleetwood has designed its recreational vehicles to provide a variety of uses for its customers. Each vehicle features optimal seating, sleeping, storage and fluid capacities. The user is responsible for selecting the proper combination of loads (i.e. occupants, equipment, fluids, cargo, etc.) to ensure that the vehicle's capacities are not exceeded.