



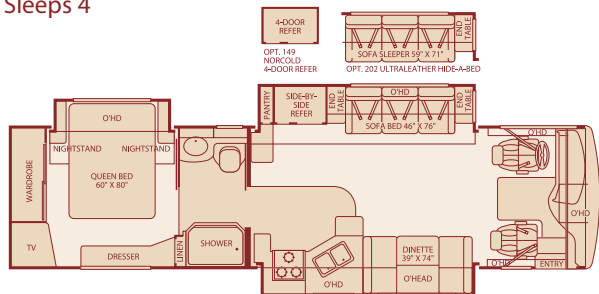
{Discovery}

DISCOVERY Class A Diesel 2005

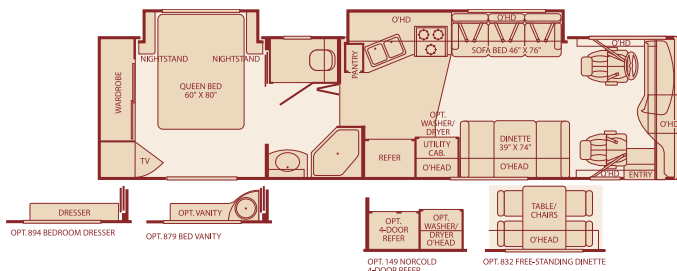


# Floor Plans

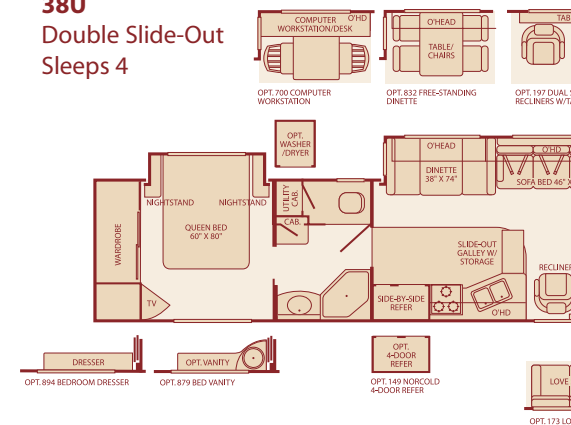
**35H**  
Triple Slide-Out  
Sleeps 4



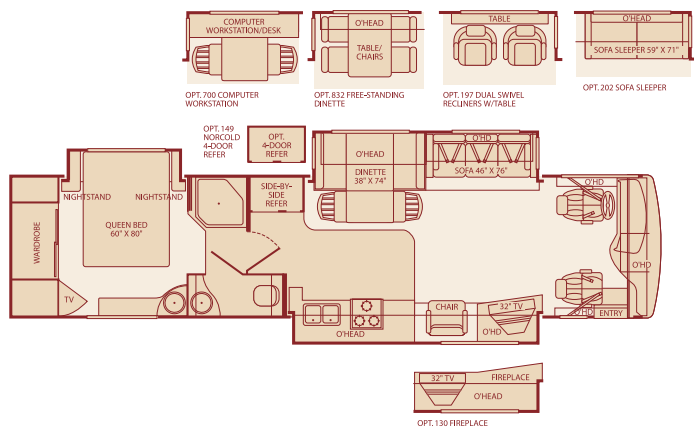
**35M**  
Double Slide-Out  
Sleeps 4



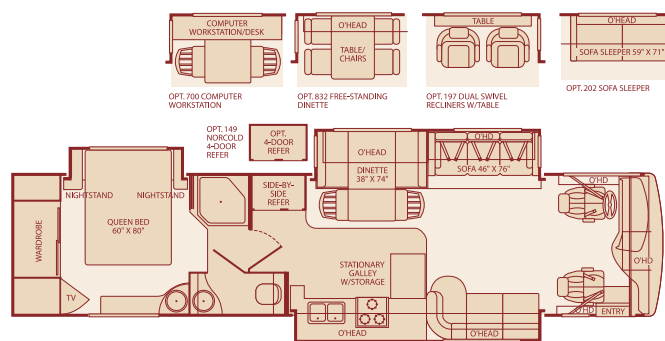
**38U**  
Double Slide-Out  
Sleeps 4



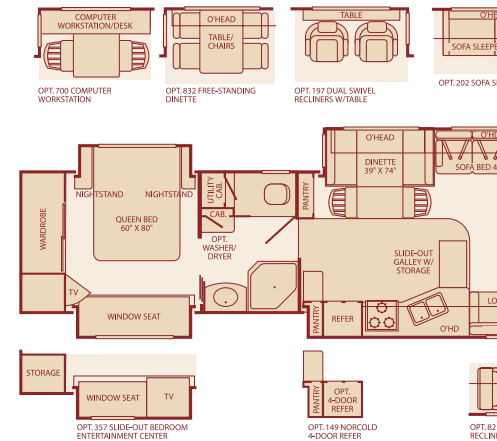
**39B**  
Triple Slide-Out  
Sleeps 4

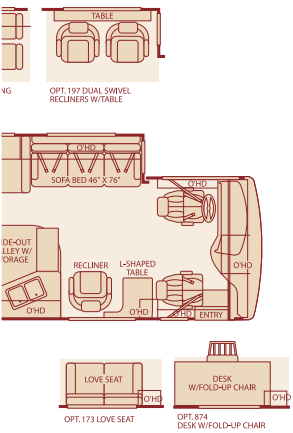


**39J**  
Triple Slide-Out  
Sleeps 5

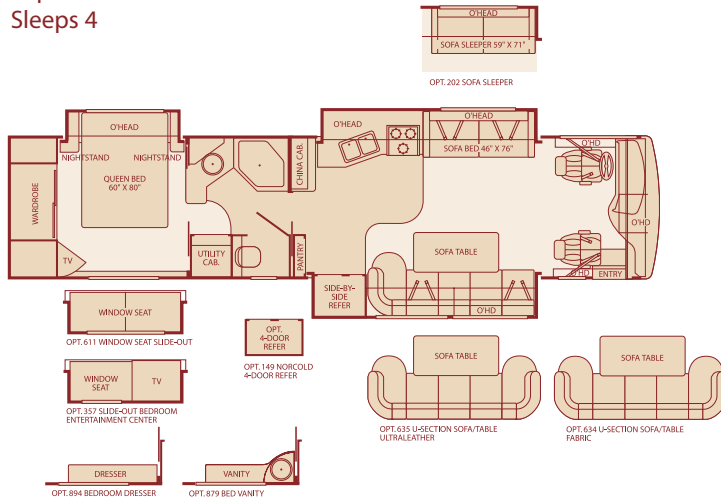


**39L**  
Quad Slide-Out  
Sleeps 4





### 39A Triple Slide-Out Sleeps 4

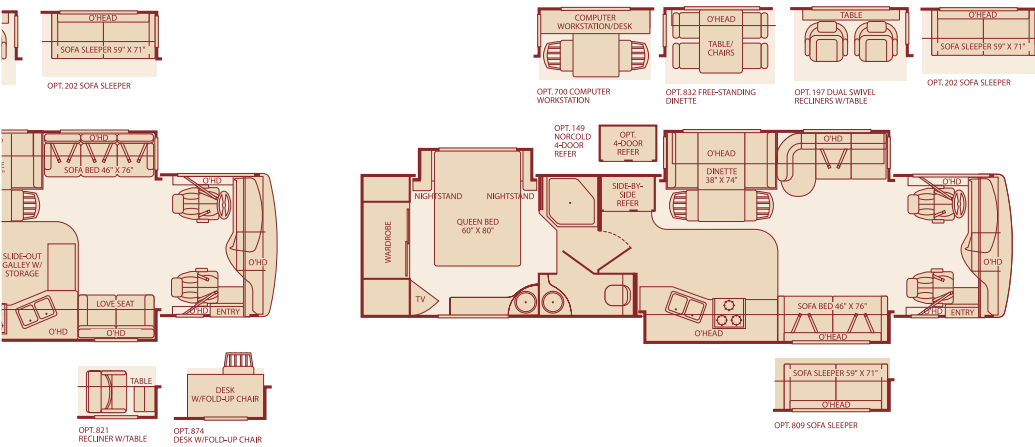


Inter-locking Ceiling-to-Sidewall Connection

Inter-locking Floor-to-Sidewall Connection

Vacu-Bond® Sidewall Construction

### 39S Triple Slide-Out Sleeps 5



Seatbelt configuration may vary depending on options chosen. Sleeping capacity based on standard layout. Optional furniture may increase or decrease sleeping capacity.

## Setting the Standard in Motor Home Quality.

**Fleetwood® prototypes are exposed to thousands of miles of durability testing. Those components that don't survive are redesigned until they do.** This sets our standard in safety and durability.

**Fleetwood's patented Power Platform supports the body with a rigid frame that reinforces the chassis to make it even stronger.** This allows Fleetwood to offer triple and quad slide-outs.

**For each outer wall, Fleetwood uses one seamless, solid piece of its exclusive Tuff-Coat® fiberglass composite. It resists UV rays, cracks and impacts.** Our products look newer longer and that's a big plus at resale time.

**To assure a strong, weather-resistant structure, Fleetwood Vacu-bonds® all sidewalls, floors and ceilings to a durable aluminum or steel frame.** The Vacu-bond® process is unmatched by many competitors.

**Fleetwood sinks and shelves are designed to handle full-size kitchenware.** Few competitors can say the same.

## Standard Features

### Interior

#### THROUGHOUT

- **Whole-Coach Water Filtration System\***
- **Dual Roof-Mounted A/C: High Efficiency w/Solar Panel & Chill Grille on Front A/C\***
- Wall-Switched Ceiling Lights
- Deluxe Ball Bearing, Full Extension Drawer Guides

#### DRIVER CONVENIENCE

- **Restyled Soft-Surface Automotive Dash w/Area for Laptop GPS\*** (Laptop & GPS Not Included)
- **High-Output Auto A/C Heater Combo\***
- **Power Sun Visors\***

#### LIVING ROOM

- **Panasonic® 5-Disc DVD Home Theater Sound System w/Hidden Surround-Sound Speakers\***

#### GALLEY

- **Six-Person Pull-Out Dinette Table\*** (Select Models)
- **Solid Surface Countertop, Sink & Range Cover\***
- Soap Dispenser
- Roll-Out Countertop (38U & 39L)
- 12 cu. ft. Side-by-Side Dometic® Refrigerator
- Window Over Sink
- Hardwood Cabinet Doors

#### BEDROOM

- **Ventilated Rear Wardrobe w/Cedar Lining, Carpeted Floor, Wire Organizer & Lighting\***
- **Restonic® Pillow Top Innerspring Mattress\***

#### BATHROOM

- **Glass Shower w/Skylight and Lower-Step Threshold\***
- **Cabinet Toe Kicks\***
- A/C Venting

- Wood-Finish Air Intake for Furnace
- 20,000 BTU/25,000 (Dual) Furnace
- 32,000 BTU Furnace (35M)
- 10-Gallon, Quick-Recovery Water Heater w/D.S.I. (Gas/Electric)
- Water Heater Bypass System
- Demand Water Pump w/FILTER
- Laminate Floor Tile

- Snack Tray/Service Door at Dash
- Tilt/Telescoping Steering Wheel
- Passenger Armrest w/Integrated Magazine Rack
- Driver/Passenger Flexsteel® Ultraleather Captain's Chairs w/Reclining Back/Slide Controls

- Flexsteel® Residential Seat Styling
- J-Lounge Sofa (Some Models)
- 27" Panasonic® Stereo TV in Over-head Compartment (32" on 39B)

- 1.4 cu. ft. Convection Microwave Oven
- 3-Burner, High-Output Cooktop w/Sealed Burners
- Light/Power Range Hood
- Coffee Maker
- Single-Lever Faucet w/Retractable Wand
- Adjustable Cabinet Shelves (Select Cabinets)

- 20" Panasonic® TV
- Bedroom Radio & Speakers
- Telephone Jack
- Bedspread w/Decor Pillows
- Day/Night Pleated Shades

- Porcelain Toilet w/Water Saver
- Fan-Tastic® Power Roof Vent
- Hardwood Cabinet Doors/Drawers
- Hardwood Bath Door/Trims

- Fire Extinguisher
- Plush Wall-to-Wall Carpet w/Pad
- Crown Molding
- Lighted Entry-Assist Handles
- Wall Sconces
- Smoke Detector/Alarm
- LPG Detector/Alarm
- CO Detector/Alarm

- 3-Point Seat Belts
- Cruise Control
- AM/FM Radio w/CD/Cassette Player
- Radio Switch–Main/Auxiliary Power
- Auxiliary Start Circuit
- Battery Shut-Off Switch

- Panasonic® Hi-Fi VCR
- DSS Satellite Dish (Manual)
- TV Antenna
- Telephone Jack

- Fan-Tastic® Power Roof Vent
- Slide-Out Dinette Bins w/Locks (Select Models)
- Wood-Trim Dinette Tabletop (Select Models)
- Under-Galley Shelving & Waste Basket

- Bedroom Vanity w/Second Sink (Some Models)

- Coordinated Bath Accessories
- Make-Up Lights (Some Models)
- Lighted Assist Handle

## Fleetwood Exclusives

- **Strong Power Platform Construction\***
- **Energy Management System (EMS) w/Soft Start\***

- **Vacu-Bond® Upper/Lower Floors\***
- **Vacu-Bond® Walls w/Smooth High-Gloss Exterior Tuff-Coat® Fiberglass\***

- **Complete TuffPEX® Plumbing System\***

\* Denotes Fleetwood's Key Features

### Exterior

#### THROUGHOUT

- **Full Body Paint\***
- **Choice of Four Colorway Graphics\***
- **4-Point Automatic Hydraulic Levelers\***
- **Weather Pro Power Awnings\*** (Patio Awning Includes Wind Sensor)
- Dual Pane Windows

#### AUTOMOTIVE

- **330-HP Caterpillar® C7 Engine w/Rear-Mounted Radiator\***
- **Freightliner® Chassis\***
- **Dual Fuel Fill\*** (One on Each Side)
- Underhood Utility Light
- Rear-Vision Camera

#### SAFETY/CONVENIENCE

- **Lighted Exterior Entry-Assist Handle\***
- **Easy-Sweep Laminate Tile Flooring at Entry Step\***

#### STORAGE

- **EZ Store Compartments on Slide-Outs\***
- Spare Tire Compartment (Spare Tire Not Included)

#### BODY STRUCTURE

- Color-Coordinated Royal Tuff-Ply Roof

- 7.5kW Onan® Quiet Diesel Generator
- Awning Rails/Drip Molding
- Fiberglass Front/Rear Caps w/High-Mounted Taillights
- Fiberglass Front Quarter Panels
- Fiberglass Rear Wheel-Well Trim

- 10,000-Lb. Weight-Distributing Hitch Receiver w/7-Point Electrical Hook-Up†
- Aluminum Wheels
- Single Motor Denso Windshield Wipers w/Wet Arm

- Entry Door w/Deadbolt Latch
- Power Entry Step
- Toilet Tank San-T-Flush™ System
- Utility Compartment w/Shower

- Continuous One-Piece Bulb Seal
- Insulated Aluminum Luggage Doors w/Stainless-Steel Hinges
- Hidden Lift Strut Supports

- Aluminum Interlocking Floor/Wall/Ceiling Framing

- 120V/12V AC/DC Converter w/2000-Watt Inverter
- Doorside Patio Receptacle
- 50-Amp Service
- 120V/12V Wire Raceways
- Water Pump Switch (3 Locations)
- Two-Stage Luggage Door Struts

- Fog Lamps
- Mud Flaps

† The chassis manufacturer recommends the installation of a supplemental brake-control system to activate the brakes on the vehicle or trailer you are towing.

- Remote Heated Rear-View Mirrors
- 20' Sewer Hose
- Four 6V/Deep-Cycle House Batteries

- Polyethylene Luggage Compartment Boxes

- Radius Roof w/Ducted A/C
- Heated Water & Holding Tank

## Options

#### THROUGHOUT

- Exterior Entertainment Center
- Exterior Pull-Out Grill & Kitchenette
- Heat Pumps
- Washer/Dryer
- Central Vacuum System
- DSS Auto-Locating Satellite Dish (Covered)
- CSA Electrical Package

#### BEDROOM

- Bedroom Vanity w/2nd Sink (N/A on 39L)
- Bedroom Dresser (35M, 38U & 39A)
- Bedroom Vanity (35M, 38U & 39A)
- Bedroom Entertainment Center (39A & 39L)
- Bedroom Window Seat Slide-Out (39A)
- Desk

#### LIVING ROOM

- Fireplace w/32" TV (39B)
- Recliner w/Table (39L)
- Dual Free-Standing Ultraleather Recliners (N/A on 35M)
- Free-Standing Ultraleather Swivel Recliner (38U & 39L)
- Ultraleather Love Seat (38U & 39L)
- Ultraleather Sofa Sleeper (N/A on 35M & 39A)
- Ultraleather J-Lounge Sofa (N/A on 35M, 39B & 39L)
- Ultraleather Sofa Bed (N/A on 39A)
- Free-Standing Dinette w/Chairs (N/A on 39A)
- J- or U-Sectional Sofa/Dinette in Fabric or Ultraleather (39A)
- Computer Workstation at Dinette (N/A on 35M or 39A)

#### DRIVER CONVENIENCE

- Stereo AM/FM w/6-Disc CD Player with Sirius® Satellite Radio (w/One-Year Subscription)
- Ultraleather Passenger Seat w/Power Foot Rest

#### GALLEY

- Norcold® 4-Door Refrigerator w/Ice Maker
- 3-Burner Sealed Drop-In Range w/Oven

#### AUTOMOTIVE

- Remote Keyless Entry
- Spotlight w/Remote Control
- Front Protective Mask
- Chrome Exterior Mirrors

## Weights and Measurements

FREIGHTLINER® CHASSIS	35H	35M	38U	39A	39B	39J	39L	39S
<b>Engine Displacement (Liters)</b>	7.2	7.2	7.2	7.2	7.2	7.2	7.2	7.2
<b>Wheelbase (Inches)</b>	208	208	242	252	252	252	252	252
<b>GVWR (lbs.)<sup>1</sup></b>	28,000	28,000	28,000	28,000	28,000	28,000	28,000	28,000
<b>Front GAWR (lbs.)<sup>2</sup></b>	10,500	10,500	10,500	10,500	10,500	10,500	10,500	10,500
<b>Rear GAWR (lbs.)<sup>2</sup></b>	17,500	17,500	17,500	17,500	17,500	17,500	17,500	17,500
<b>Base Weight (lbs.)<sup>3</sup></b>	21,655	21,255	21,555	22,605	22,605	22,605	22,900	22,605
<b>GCWR (lbs.)<sup>4</sup></b>	38,000	38,000	38,000	38,000	38,000	38,000	38,000	38,000
<b>Hitch Rating Weight (lbs.)<sup>*</sup></b>	10,000	10,000	10,000	10,000	10,000	10,000	10,000	10,000
<b>Tongue Weight (lbs.)<sup>*</sup></b>	1,000	1,000	1,000	1,000	1,000	1,000	1,000	1,000
<b>Fuel Capacity (gal.)</b>	90	90	90	90	90	90	90	90

### DIMENSIONS AND CAPACITIES

<b>Overall Length<sup>5</sup></b>	35' 4"	35' 4"	38' 2"	39' 0"	39' 0"	39' 0"	39' 0"	39' 0"
<b>Overall Height (with A/C)</b>	12' 3"	12' 3"	12' 3"	12' 3"	12' 3"	12' 3"	12' 3"	12' 3"
<b>Overall Width (maximum)<sup>6</sup></b>	102"	102"	102"	102"	102"	102"	102"	102"
<b>Interior Height (maximum)</b>	79"	79"	79"	79"	79"	79"	79"	79"
<b>Interior Width (maximum)</b>	96"	96"	96"	96"	96"	96"	96"	96"
<b>Fresh Water Holding Tank (gal.)</b>	86	86	86	86	86	86	86	86
<b>Grey Water Holding Tank (gal.)</b>	50	50	50	50	50	50	50	50
<b>Black Water Holding Tank (gal.)</b>	50	50	50	50	50	50	50	50
<b>Appliance LPG Tank (gal.) (WC)<sup>7</sup></b>	38	38	38	38	38	38	38	37
<b>Water Heater Tank (gal.)</b>	10	10	10	10	10	10	10	10

**Liquid Weight Reference:** Water (gal.) = (8.3 lbs./3.8 kgs.) Fuel (gal.) = (7.1 lbs./3.2 kgs.) LPG (gal.) = (4.2 lbs./1.9 kgs.)

**Metric Conversion:** Multiply pounds x 0.453 to obtain kilograms. Multiply gallons x 3.785 to obtain liters.

### CHASSIS

<b>Frame:</b> Freightliner® XC-Series	<b>Transmission:</b> Allison® 3000 MH, 6-Speed w/Electronic Shifter
<b>Engine:</b> Cat® C7 330 HP	<b>Alternator Amps:</b> 160-Amp Delco
<b>Torque:</b> 860 lb.-ft. @ 1440 RPM	<b>Tires:</b> Goodyear® 275/70R 22.5H

1. GVWR (Gross Vehicle Weight Rating): Maximum permissible loaded weight of the motor home. The GVWR is equal to or greater than the sum of the unloaded vehicle weight plus the net carrying capacity.
  2. GAWR (Gross Axle Weight Rating): Maximum permissible loaded weight a specific axle is designed to carry.
  3. Base Weight: Estimated weight of the motor home without fuel, options, water, cargo or passengers.
  4. GCWR (Gross Combined Weight Rating): Value specified by the motor home manufacturer as the maximum allowable loaded weight of this motor home with its towed vehicle. Towing and braking capacities may differ. Refer to Fleetwood and chassis manufacturer manuals for complete information.
  5. Length taken from front bumper to rear bumper (excludes accessories).
  6. Excludes safety equipment and awnings.
  7. Tank manufacturer's listed water capacity (WC). Actual LPG capacity is 80% of water listing as required by the safety code.
- \* The chassis manufacturer recommends the installation of a supplemental brake-control system to activate the brakes on the vehicle or trailer you are towing.

*IMPORTANT— PLEASE READ: Product information, photography and illustrations included in this publication were as accurate as possible at the time of printing. For further product information and changes, please visit our website at [www.fleetwoodrv.com](http://www.fleetwoodrv.com) or contact your local Fleetwood dealer. Prices, materials, design and specifications are subject to change without notice. All weights, fuel, liquid capacities and dimensions are approximate. Fleetwood has designed its recreational vehicles to provide a variety of uses for customers. Each vehicle features optimal seating, sleeping, storage and fluid capacities. The user is responsible for selecting the proper combination of loads (i.e. occupants, equipment, fluids, cargo, etc.) to ensure that the vehicle's capacities are not exceeded.*

## What Drives You?

Maybe it's feeling like you're the only one on Earth. Perhaps it's the unique sense of closeness with the great outdoors. Or, it might be the joy that comes from spending quality time with family and friends. Whatever the reason, we know that you have a strong drive to experience everything that comes with spending time on the road. And for more than 50 years, we've shared that passion with you. Because we're RV enthusiasts ourselves, you can see our passion in the vehicles we design and build. Own a Fleetwood, and you'll feel like you're not just traveling, but embarking on an experience unlike any other. Set your own course for adventure and get out there and explore the world around you. Once you do, you'll see what it is that drives us — it's you.

**RV OWNERCARE\*** is a limited one-year/15,000-mile and three-year/50,000-mile structural warranty, whichever occurs first, and it is fully transferable for the first 12 months. RV OWNERCARE is one of the RV industry's most comprehensive programs and includes systems, appliances, components and construction, with no deductible and no service charge. RV OWNERCARE coverage is provided from a company that will be around in the future to service your needs. See your nearest Fleetwood dealer for a full explanation of benefits and restrictions.

**CLUB FLEETWOOD** As a Fleetwood owner, you're eligible to become a member of our owners' group, Club Fleetwood. It's a perfect way to meet other Fleetwood owners who love to travel to beautiful resorts and vacation spots all across America. Call (877) 577-2560 and join the fun! Or visit [www.fleetwood.com/clubs](http://www.fleetwood.com/clubs) to learn more. For Discovery specific club information contact: Discovery International Chapter of FMCA [www.difmca.com](http://www.difmca.com), (913) 259-2909, or Discovery Owners Association, Inc. [www.discoveryowners.com](http://www.discoveryowners.com), (859) 623-8406.

**FLEETWOODRV.COM** To locate a dealer near you, visit our website or call 1-800-444-4905. We can also be contacted at Fleetwood Customer Relations, P.O. Box 7638, Riverside, CA 92513-7638.

**IMPORTANT—PLEASE READ** Product information, photography and illustrations included in this publication were as accurate as possible at the time of printing. For further product information and changes, please visit our website at [www.fleetwoodrv.com](http://www.fleetwoodrv.com) or contact your local Fleetwood dealer. Prices, materials, design and specifications are subject to change without notice. All weights, fuel, liquid capacities and dimensions are approximate. Fleetwood has designed its recreational vehicles to provide a variety of uses for customers. Each vehicle features optimal seating, sleeping, storage and fluid capacities. The user is responsible for selecting the proper combination of loads (i.e.: occupants, equipment, fluids, cargo, etc.) to ensure that the vehicle's capacities are not exceeded.

Your local Fleetwood dealer is:

[www.fleetwoodrv.com](http://www.fleetwoodrv.com)

\*For complete info see your Fleetwood dealer. © 2004. Fleetwood Enterprises, Inc.  
Printed in the USA. Inventory control number DI05F2 10/04.

tread lightly!  
LEAVING A GOOD IMPRESSION

