



DISCOVERY-Floor Plans, Standard Features and Options

# Discovery



DISCOVERY-Class A Diesel-2006

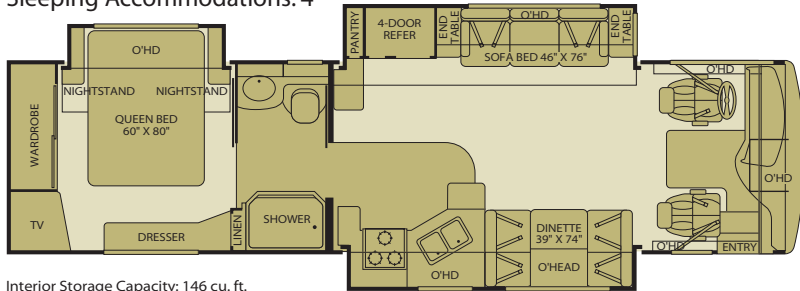


## Floor Plans

### 35H

Triple Slide-Out

Sleeping Accommodations: 4\*

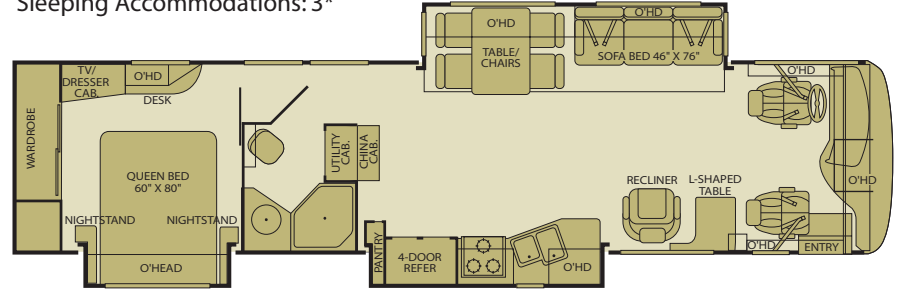


Interior Storage Capacity: 146 cu. ft.  
Exterior Storage Capacity: 94 cu. ft.

### 39C

Triple Slide-Out

Sleeping Accommodations: 3\*

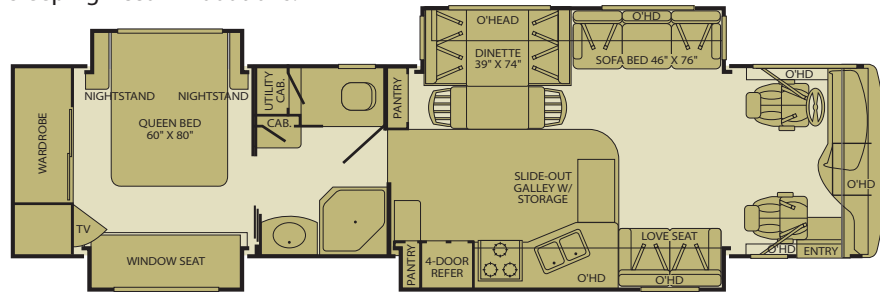


Interior Storage Capacity: 156 cu. ft.  
Exterior Storage Capacity: 119 cu. ft.

### 39L

Quad Slide-Out

Sleeping Accommodations: 4\*

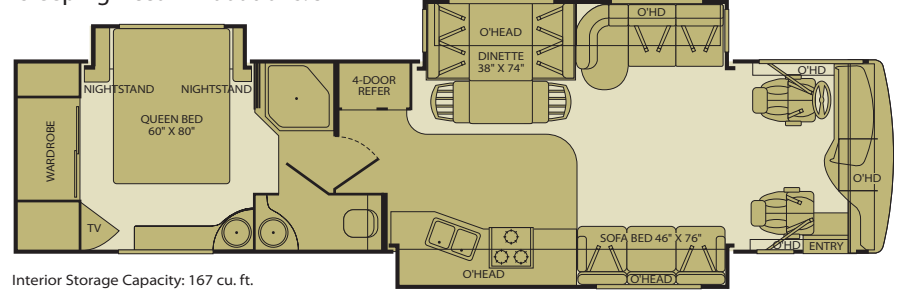


Interior Storage Capacity: 189 cu. ft.  
Exterior Storage Capacity: 127 cu. ft.

### 39S

Triple Slide-Out

Sleeping Accommodations: 5\*



Interior Storage Capacity: 167 cu. ft.  
Exterior Storage Capacity: 127 cu. ft.

## Options

OPT. 126 WASHER/DRYER  
Available on:  
All floor plans

OPT. 173 ULTRALEATHER LOVE SEAT  
Available on: 39C,  
39L, 39V

OPT. 174 ULTRALEATHER SOFA  
Available on: 35H, 39C,  
39J, 39L, 39V

OPT. 175 ULTRALEATHER J-LOUNGE  
Available on: 39J, 39S

OPT. 197 DUAL SWIVEL RECLINERS W/TABLE  
Available on: 39J, 39L,  
39S, 39V

OPT. 200 ULTRALEATHER SOFA SLEEPER W/AIR MATTRESS  
Available on: All floor plans

OPT. 201 ULTRALEATHER SOFA SLEEPER W/AIR MATTRESS  
Available on: 39S

OPT. 357 SLIDE-OUT BEDROOM ENTERTAINMENT CENTER  
Available on: 39L

OPT. 491 ULTRALEATHER SWIVEL RECLINER  
Available on: 39V

OPT. 497 PASSENGER SEAT W/FOOTREST  
Available on:  
All floor plans

OPT. 700 COMPUTER WORKSTATION  
Available on: 39J, 39L,  
39S, 39V

OPT. 804 ULTRALEATHER SOFA BED  
Available on:

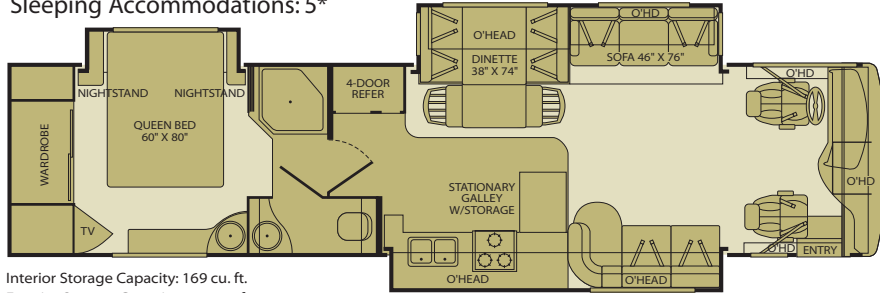
OPT. 821 RECLINER W/TABLE  
Available on: 39

Seatbelt configuration may vary depending on options chosen.

\*Sleeping accommodations are based on designed sleeping areas and may be greater than Sleeping Capacity Weight Rating (SCWR) found on the Cargo Carrying Capacity label located in

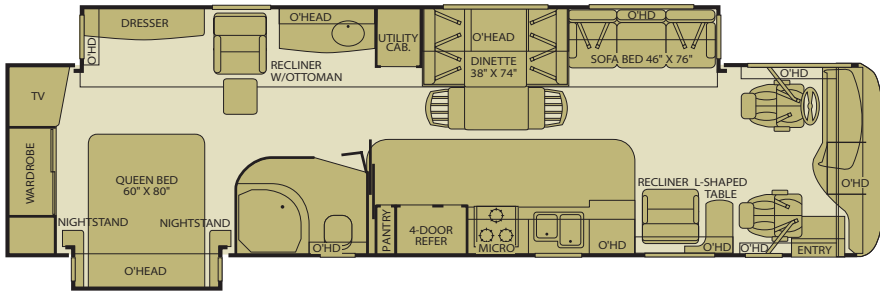


**39J**  
Triple Slide-Out  
Sleeping Accommodations: 5\*



Interior Storage Capacity: 169 cu. ft.  
Exterior Storage Capacity: 127 cu. ft.

**39V**  
FEATURING A FULL WALL SLIDE  
Double Slide-Out  
Sleeping Accommodations: 4\*



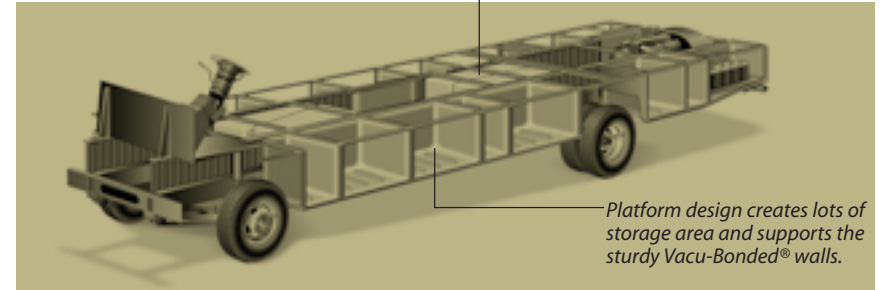
Interior Storage Capacity: 177 cu. ft.  
Exterior Storage Capacity: 147 cu. ft.

**POWER PLATFORM CONSTRUCTION**

Fleetwood's patented Power Platform begins with two 10-in. steel I-beams welded lengthwise to the chassis. From the beams, steel outriggers extend outward. Together, they create a basement for fluid tanks and storage while supporting the floor, walls and roof with a rigid metal frame. This complements the chassis to make it even stronger.

Holding tanks are positioned in the bottom center of the platform to enhance vehicle stability.

Holding tanks are enclosed between the upper and lower basement floors. This allows them to be heated to prevent freezing in cold weather.



Platform design creates lots of storage area and supports the sturdy Vacu-Bonded® walls.



Inter-locking Ceiling-to-Sidewall Connection

Inter-locking Floor-to-Sidewall Connection

Vacu-Bond® Sidewall Construction

**Setting The Standard In Motor Home Quality.**

Fleetwood® prototypes are exposed to thousands of miles of durability testing. Those components that don't survive are redesigned until they do. This sets our standard in safety and durability.

Fleetwood's patented Power Platform supports the body with a rigid frame that reinforces the chassis to make it even stronger. This allows Fleetwood to offer triple and quad slide-outs.

For each outer wall, Fleetwood uses one seamless, solid piece of its exclusive Tuff-Coat® fiberglass composite. It resists UV rays, cracks and impacts. Our products look newer longer and that's a big plus at resale time.

To assure a strong, weather-resistant structure, Fleetwood Vacu-bonds® all sidewalls, floors and ceilings to a durable aluminum or steel frame. The Vacu-bond® process is unmatched by many competitors.

Fleetwood sinks and shelves are designed to handle full-size kitchenware. Few competitors can say the same.

Drawings are for illustrative purpose only to highlight aspects of motor home construction. Actual motor home design depends on model and is subject to change.

<p>ULTRALEATHER DINETTE Available on: 39S</p> <p>1 RECLINER W/ TABLE Available on: 39L</p>	<p>OPT. 832 FREE-STANDING DINETTE Available on: 39J, 39L, 39S, 39V</p>	<p>OPT. 833 FREE-STANDING DINETTE W/CREDENZA Available on: All floor plans</p>	<p>OPT. 834 SIDE DINETTE Available on: 39C</p>	<p>OPT. 874 DESK W/ FOLD-UP CHAIR Available on: 39L</p>	<p>OPT. 855 QUEEN BED W/AIR MATTRESS Available on: All floor plans</p>
--	--	--	--	---	--

Label located in each RV. Sleeping accommodations are based on standard layout. Optional furniture may increase or decrease sleeping accommodations.

## Standard Features

### Interior

#### THROUGHOUT

- **84" Interior Ceiling Height**
- **Deluxe Roller Bearing, Full Extension Drawer Guides**
- **Dual Roof-Mounted A/C: High Efficiency w/Solar Panel & Chill Grille on Front A/C**
- **Whole Coach Water Filtration System**

#### DRIVER CONVENIENCE

- **Driver/Front Passenger Ultraleather™ Captain's Chairs w/Reclining Back/Slide Controls w/Power Driver Seat**
- **Driver Side Manual Pull Down Shade**
- **High-Output Auto A/C Heater Combo**
- **Power Driver/Front Passenger**

#### LIVING ROOM

- **DVD Home Theater Sound System w/Hidden Surround-Sound Speakers**
- **27" Stereo TV in Overhead**

#### GALLEY

- **Six-Person Pull-Out Dinette Table (Select Models)**
- **Solid Surface Countertop, Sink & Range Covers**
- **1.4 cu. ft. Convection Microwave Oven**
- **3-Burner, High-Output Cooktop w/Sealed Burners**
- **Adjustable Cabinet Shelves**

#### BEDROOM

- **Remote Generator Start**
- **Restonic® Deluxe Pillow Top Innerspring Mattress**
- **Ventilated Rear Wardrobe w/Cedar Lining, Carpeted Floor & Wire Organizer**

#### BATHROOM

- **Cabinet Toe Kicks**
- **A/C Venting**
- **Coordinated Bath Accessories**
- **Fan-Tastic® Power Roof Vent**

#### SAFETY / CONVENIENCE

- **Carbon Monoxide Detector/Alarm**
- **Fire Extinguisher**

- **10-Gallon Quick-Recovery Water Heater w/Direct Spark Ignition (Gas/Electric)**
- **20,000/ 25,000 BTU Dual Furnace**
- **20,000/ 30,000 BTU Dual Furnace (39V)**
- **Crown Molding**
- **Demand Water Pump w/Filter**
- **Laminate Floor Tile**
- **Plush Wall-to-Wall Carpet w/Pad**
- **Wall Sconces**
- **Wall-Switches (Includes Switches for Ceiling Lights & Vents)**
- **Water Heater Bypass**
- **Wood-Finish Air Intake for Furnace**

#### Sun Visors

- **Restyled Soft-Surface Automotive Dash w/Area for Laptop GPS (Laptop & GPS Not Included)**
- **Adjustable 3-Point Seat Belts at Driver & Front Passenger Seats**
- **AM/FM Radio w/CD/Cassette Player**
- **Auxiliary Start Circuit**
- **Battery Shut-Off Switch**
- **CB Radio Ready**
- **Cruise Control**
- **Passenger Armrest w/Integrated Magazine Rack**
- **Radio Switch—Main/Auxiliary Power**
- **Snack Tray/Service Door at Dash**
- **Tilt/Telescoping Steering Wheel**

- **Flexsteel® Residential Seat Styling**
- **Hi-Fi VCR**
- **J-Lounge Sofa (Some Models)**
- **Satellite Ready**

(Select Cabinets)

- **Coffee Maker**
- **Fan-Tastic® Power Roof Vent**
- **Hardwood Cabinet Doors**
- **Light/Power Range Hood**
- **Norcold® 4-Door Refrigerator w/Ice Maker and Water Dispenser**
- **Roll-Out Countertop (39L)**
- **Single-Lever Galley Faucet**

- **Telephone Jack**
- **TV Antenna**
- **w/Pullout Sprayer**
- **Slide-Out Dinette Bins w/Latches (Select Models)**
- **Soap Dispenser**
- **Under-Galley Shelving & Wastebasket**
- **Window Over Sink**
- **Wood-Trim Dinette Tabletop (Select Models)**

- **20" TV w/Swivel**
- **Bedroom Radio & Speakers**
- **Bedroom Slide-Out Features Overhead Cabinet**
- **Bedroom Vanity w/Second Sink (Some Models)**

- **Bedsprad w/Decor Pillows**
- **Coffer Ceiling**
- **Day/Night Pleated Shades**
- **Second Phone Jack**
- **Wardrobe Lighting**

- **w/Wall Switch**
- **Glass Shower w/Skylight and Low Threshold**
- **Hardwood Bath Door/Trims**

- **Hardwood Cabinet Doors/Drawers**
- **Lighted Assist Handle**
- **Make-Up Lights (Some Models)**
- **Porcelain Toilet w/Water Saver**

- **Lighted Entry-Assist Handles**
- **Propane Detector/Alarm**

- **Smoke Detector/Alarm**

## Fleetwood Advantages

- **Complete TuffPEX® Plumbing System**
- **Energy Management System (EMS) w/Soft Start**

- **Full Wall Slide (Patent Pending)\***
- **Power Platform Construction\***
- **Vacu-Bond® Upper/Lower Floors**

- **Vacu-Bond® Walls w/Smooth High-Gloss Exterior Tuff-Coat® Fiberglass**

### Exterior

#### THROUGHOUT

- **4-Point Automatic Hydraulic Levelers**
- **Choice of Four Colorway Graphics**
- **Full Body Paint**
- **Weather Pro Power Awnings (Patio Awning Includes Wind Sensor)**

#### AUTOMOTIVE

- **330-HP Caterpillar® C7 Engine w/Rear-Mounted Radiator**
- **Dual Fuel Fill (One on Each Side)**
- **Freightliner® Chassis**
- **10,000-Lb. Weight-Distributing Hitch Receiver w/7-Point Electrical Hook-Up†**

#### SAFETY / CONVENIENCE

- **Easy-Sweep Laminate Tile Flooring at Entry Step**
- **Lighted Exterior Entry-Assist Handle**
- **20' Sewer Hose**

#### STORAGE

- **EZ Store Compartments on Slide-Outs**
- **Continuous One-Piece Compartment Bulb Seal**
- **Gas-Lift Strut Supports**

#### BODY STRUCTURE

- **Aluminum Interlocking Floor/Wall/Ceiling Framing**
- **Color-Coordinated Royal Tuff-Ply Roof**

- **120V/12V AC/DC Converter**
- **120V/12V Wire Raceways**
- **2000-Watt Inverter w/Remote**
- **50-Amp Service**
- **7.5KW Onan® Quiet Diesel Generator**
- **Awning Rail/Drip Molding (Both Sides)**
- **Doorside Patio Receptacle**

- **Aluminum Wheels**
- **Fog Lamps**
- **Mud Flaps**
- **Rear-Vision Camera**
- **Single Motor Denso® Windshield Wipers w/Wet Arm**
- **Underhood Utility Light**

- **Entry Door w/Screen Door & Deadbolt Lock**
- **Four 6V/Deep-Cycle House Batteries**
- **Power Entry Step**
- **Remote Heated Rear-View Mirrors**

- **Insulated Aluminum Luggage Doors w/Single Paddle Metal Latches & Stainless-Steel Hinges**
- **Large Compartment Doors at EZ Store**

- **Heated Water & Holding Tank Compartments**
- **Radius Roof w/Ducted A/C**

- **Dual Pane Windows w/Screens**
- **Fiberglass Front Quarter Panels**
- **Fiberglass Front/Rear Caps w/High-Mounted Taillights**
- **Fiberglass Wheel Well Trims**
- **Two-Stage Luggage Door Struts**
- **Water Pump Switch (Multiple Locations)**

† The chassis manufacturer recommends the installation of a supplemental brake control system to activate the brakes on the vehicle or trailer you are towing. Hitch receiver ratings expressed are maximum for the hitch receiver installed and may require the purchase of additional equipment that is dependant on the weight of the towed load. Consult with hitch receiver manufacturer for further information.

- **Toilet Tank San-T-Flush™ System**
- **Utility Compartment w/Exterior Shower**

- **Lighted Luggage Compartments**
- **Rotomolded Polyethylene Luggage Compartments**
- **Spare Tire Compartment (N/A 39V) (Spare Tire Not Included)**

## Options

#### THROUGHOUT (EXTERIOR)

- **CSA Electrical Package**
- **DSS Auto-Locating Satellite Dish (Covered)**
- **Exterior Entertainment Center**
- **Exterior Pull-Out Grill & Kitchenette**
- **Heat Pumps**

#### BEDROOM

- **Bedroom Entertainment Center (39L)**
- **Bedroom Vanity w/Sink (N/A on 39L)**
- **Desk**

#### THROUGHOUT (INTERIOR)

- **Central Vacuum System**
- **Washer/Dryer**
- **Water Heater 16 Gallon Output**

#### LIVING ROOM

- **Computer Workstation at Dinette**
- **Dual Free-Standing Ultraleather™ Recliners**
- **Free-Standing Dinette w/Chairs**
- **Free-Standing Dinette w/Credenza**
- **Free-Standing Ultraleather™ Swivel Recliner (39L)**
- **Recliner w/Table (39L)**
- **Ultraleather™ J-Lounge Sofa (N/A on 39L)**
- **Ultraleather™ Love Seat (39L)**
- **Ultraleather™ Sofa Bed**
- **Ultraleather™ Sofa Sleeper w/Air Mattress**

#### GALLEY

- **3-Burner Sealed Drop-In Range w/Oven**
- **14 cu. ft. Dometic® Frost-Free Refrigerator**

#### DRIVER CONVENIENCE

- **Automatic Generator Start Switch**
- **Stereo AM/FM w/6-Disc CD Player with Sirius® Satellite Radio (w/6 Month Subscription)**
- **Ultraleather™ Passenger Seat w/Power Foot Rest**

#### AUTOMOTIVE

- **Chrome Exterior Mirrors**
- **Front Protective Mask**
- **Remote Keyless Entry**
- **Spotlight w/Remote Control**

*Bold Denotes Fleetwood's Key Features*

*\* Denotes Fleetwood Exclusives*

## Weights and Measurements

FREIGHTLINER® CHASSIS	35H	39C	39J	39L	39S	39V
Engine Displacement (Liters)	7.2	7.2	7.2	7.2	7.2	7.2
Wheelbase (Inches)	208	208	252	252	252	252
GVWR (lbs) <sup>1</sup>	31,000	31,000	31,000	31,000	31,000	31,000
Front GAWR (lbs) <sup>2</sup>	12,000	12,000	12,000	12,000	12,000	12,000
Rear GAWR (lbs) <sup>2</sup>	19,000	19,000	19,000	19,000	19,000	19,000
Base Weight (lbs) <sup>3</sup>	21,655	22,605	22,605	22,900	22,605	22,900
GCWR (lbs) <sup>4</sup>	41,000	41,000	41,000	41,000	41,000	41,000
Hitch Rating Weight (lbs) <sup>†</sup>	10,000	10,000	10,000	10,000	10,000	10,000
Tongue Weight (lbs) <sup>†</sup>	1,000	1,000	1,000	1,000	1,000	1,000
Fuel Capacity (gal)	90	90	90	90	90	90

### DIMENSIONS AND CAPACITIES

Overall Length <sup>5</sup>	35' 4"	39' 0"	39' 0"	39' 0"	39' 0"	39' 0"
Overall Height (with A/C)	12' 8"	12' 8"	12' 8"	12' 8"	12' 8"	12' 8"
Overall Width (maximum) <sup>6,7</sup>	102"	102"	102"	102"	102"	102"
Interior Height (maximum)	84"	84"	84"	84"	84"	84"
Interior Width (maximum)	96"	96"	96"	96"	96"	96"
Fresh Water Holding Tank (gal)	86	84	86	86	86	86
Grey Water Holding Tank (gal)	50	50	50	50	50	50
Black Water Holding Tank (gal)	50	50	50	50	50	50
Appliance Propane Tank (gal) (WC) <sup>8</sup>	38	38	38	38	37	37
Water Heater Tank (gal)	10	10	10	10	10	10

**Liquid Weight Reference:** Water (gal) = (8.3 lbs/3.8 kgs) Fuel (gal) = (7.1 lbs/3.2 kgs) Propane (gal) = (4.2 lbs/1.9 kgs)

**Metric Conversion:** Multiply pounds x 0.453 to obtain kilograms. Multiply gallons x 3.785 to obtain liters.

### CHASSIS

<b>Frame:</b> Freightliner® XC-Series	<b>Transmission:</b> Allison® 3000 MH, 6-Speed w/Electronic Shifter
<b>Engine:</b> Cat® C7 330 HP	<b>Alternator Amps:</b> 160-Amp Delco
<b>Torque:</b> 860 lb-ft @ 1440 RPM	<b>Tires:</b> Goodyear® 275/70R 22.5H

1. GVWR (Gross Vehicle Weight Rating) is the maximum permissible weight of this fully loaded motor home. The GVWR is equal to or greater than the sum of the unloaded vehicle weight plus the cargo carrying capacity.

2. GAWR (Gross Axle Weight Rating) is the maximum permissible loaded weight a specific axle is designed to carry.

3. Base Weight is the estimated weight of the motor home without fuel, options, water, cargo or passengers.

4. GCWR (Gross Combined Weight Rating) is the value specified by the motor home manufacturer as the maximum allowable loaded weight of this motor home with its towed vehicle. Towing and braking capacities may be different. Refer to Fleetwood and chassis manufacturer's manuals for complete information.

5. Length taken from front bumper to rear bumper (excludes accessories).

6. Excludes safety equipment and awnings.

7. Motor homes feature a body-width over 96" which will restrict your access to certain roads. Before purchasing, you should research any state and/or province road laws which may affect your usage.

8. Tank manufacturer's listed water capacity (WC). Actual propane capacity is 80% of water listing as required by the safety code.

† The chassis manufacturer recommends the installation of a supplemental brake control system to activate the brakes on the vehicle or trailer you are towing. Hitch receiver ratings expressed are maximum for the hitch receiver installed and may require the purchase of additional equipment that is dependant on the weight of the towed load. Consult with hitch receiver manufacturer for further information.

**IMPORTANT — PLEASE READ:** Product information, photography and illustrations included in this publication were as accurate as possible at the time of printing. For further product information and changes, please visit our website at [www.fleetwoodrv.com](http://www.fleetwoodrv.com) or contact your local Fleetwood dealer. Prices, materials, design and specifications are subject to change without notice. All weights, fuel, liquid capacities and dimensions are approximate. Fleetwood has designed its recreational vehicles to provide a variety of uses for its customers. Each vehicle features optimal seating, sleeping, storage and fluid capacities. The user is responsible for selecting the proper combination of loads (i.e. occupants, equipment, fluids, cargo, etc.) to ensure that the vehicle's capacities are not exceeded.

## What Drives You?

Maybe it's feeling like you're the only one on Earth. Perhaps it's the unique sense of closeness with the great outdoors. Or, it might be the joy that comes from spending quality time with family and friends. Whatever the reason, we know that you have a strong drive to experience everything that comes with spending time on the road. And for more than 50 years, we've shared that passion with you. Because we're RV enthusiasts ourselves, you can see our passion in the vehicles we design and build. Own a Fleetwood, and you'll feel like you're not just traveling, but embarking on an experience unlike any other. Set your own course for adventure and get out there and explore the world around you. Once you do, you'll see what it is that drives us — it's you.



**RV OWNERCARE\*** is a limited one-year/15,000-mile coach warranty and three-year/50,000-mile structural warranty, whichever occurs first, and it is fully transferable for the first 12 months. RV OWNERCARE is one of the RV industry's most comprehensive programs and includes systems, appliances, components and construction, with no deductible and no service charge. RV OWNERCARE coverage is provided from a company that will be around in the future to service your needs. See your nearest Fleetwood dealer for a full explanation of benefits and restrictions.

**FLEETWOOD TRAVELCADE CLUB** As a Fleetwood owner, you're eligible to become a member of our owners' group, Fleetwood Travelcade Club. It's a perfect way to meet other Fleetwood owners who love to travel across America and share in the RV lifestyle. Call (877) 577-2560 or visit [www.fleetwood.com/clubs](http://www.fleetwood.com/clubs) to learn more and join the fun! For Discovery specific club information contact: Discovery Owners Association, Inc., [www.discoveryowners.com](http://www.discoveryowners.com), (888) 594-6818 or Discovery International Chapter of FMCA [www.difmca.com](http://www.difmca.com).

**FLEETWOODRV.COM** To locate a dealer near you, visit our website or call 1-800-444-4905. We can also be contacted at Fleetwood Customer Relations, P.O. Box 7638, Riverside, CA 92513-7638.

**IMPORTANT—PLEASE READ** Product information, photography and illustrations included in this publication were as accurate as possible at the time of printing. For further product information and changes, please visit our website at [www.fleetwoodrv.com](http://www.fleetwoodrv.com) or contact your local Fleetwood dealer. Prices, materials, design and specifications are subject to change without notice. All weights, fuel, liquid capacities and dimensions are approximate. Fleetwood has designed its recreational vehicles to provide a variety of uses for customers. Each vehicle features optimal seating, sleeping, storage and fluid capacities. The user is responsible for selecting the proper combination of loads (i.e.: occupants, equipment, fluids, cargo, etc.) to ensure that the vehicle's capacities are not exceeded.

Your local Fleetwood dealer is:



[www.fleetwoodrv.com](http://www.fleetwoodrv.com)

\*For complete info see your Fleetwood dealer. ©2005. Fleetwood Enterprises, Inc. Printed in the USA. Inventory control number D106F2 10/05.

