

FLEETWOOD RV

2012 CLASS A DIESEL

DISCOVERY®

# Discovery®



## THE JOY OF TRAVEL

When it comes to traveling, some will, some won't, and some make sure they do it right. With contemporary charm and a commanding presence, your Discovery is the envy of the entire camp. Traveling in a Discovery is a celebration, and everyone wants to join the excitement.





## WHY BUY DISCOVERY?

**Step Up to Luxury** Discovery is the brand so many motor home owners aspire to own. Its power and luxury is truly impressive.

**Built for Comfort and Convenience** In Discovery, you'll find ergonomically designed spaces that are more livable and comfortable—they just feel right.

**Unmistakable Quality** Discovery owners have high expectations, and Discovery does not disappoint. The exceptional quality of the components is consistent throughout.

**Space for Entertaining** The more the merrier, with a galley suitable for preparing big meals, countertop space for party trays and drinks, and plenty of room for guests.

**Luxurious Bed and Bath** The oversized bedroom suite is built for relaxation, with fine amenities and ample space to spread out.



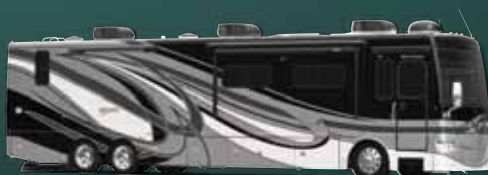
# 2012 GRAPHICS AND DÉCOR



Both inside and out, we offer a wide selection of colors, styles and finishes. From the moment you lay your eyes on a Fleetwood RV, the high-style graphics and décor collection welcome you with gracious beauty and contemporary design. We've paid attention to every detail. So wherever you are, you'll feel right at home.



GOLD STARFIRE



PLATINUM FROST



CASHMERE TWIST



CONCORD FROST



COPPER JAVA

	ANTIQUE COPPER	CHESTNUT RAVEN	MOONSTONE KHAKI		CABINETRY
SOFA				WARM HONEY	
ACCENT					
BEDSPREAD					
COUNTERTOP				BROWN SUGAR	
FLOORING					
CARPET					

# STANDARD FEATURES AND OPTIONS

## STANDARD FEATURES

### INTERIOR THROUGHOUT

- 20,000/25,000 BTU Dual Furnaces (36J, 40G)
- 20,000/30,000 BTU Dual Furnaces (40X)
- 25,000/34,000 BTU Dual Furnaces (42A, 42M, 42D)
- 84" Interior Ceiling Height
- Complete PEX Plumbing System
- Crown Molding
- Manual Double Roller Shades
- Deluxe Roller Bearing, Full-Extension Drawer Guides & Transit-Ship Locks
- Demand Water Pump w/Filter
- Dual Roof-Mounted, High-Efficiency A/C w/Solar Panel
- Hardwood Cabinet Doors/Drawers
- Wall-to-Wall Porcelain Flooring with Decorative Tile Inserts
- Plush Wall-to-Wall Carpet w/Carpet Pad in Bedroom (36J, 40X, 40G)
- Bedroom Tile (42A, 42M, 42D)
- Stackable Washer & Dryer
- Wall Sconces
- Wall Switches (Includes Switches for Ceiling Lights & Vents)
- Water Heater Bypass
- Whole-Coach Water Filtration System
- Wood Finish Return Air Intake for Furnace
- Central Vacuum System
- Water Heater 16-Gallon Output

### DRIVER CONVENIENCE

- Adjustable 3-Point Seatbelts at Driver & Front Passenger Seats (w/Adjustable Shoulder Straps)
- Smart Wheel
- Dual Dash Monitors
- Auxiliary Start Circuit
- Battery Disconnect System
- Cruise Control
- Driver-Side Manual Pull-Down Shade
- Villa® Driver/Front Passenger Soft-Touch Captain's Chairs w/Reclining Back/Slide Controls w/Power Driver Seat
- Denso High-Output Auto A/C Heater Combo
- Passenger Armrest w/Integrated Magazine Rack & Easy-Access Battery Disconnect Switch
- Power Driver/Front Passenger Sun Visors
- Radio Switch Main/Auxiliary Power
- Snack Tray/Service Door at Dash
- Tilt/Telescoping Steering Wheel
- Power Entry Step Cover
- 110-Volt Power Outlet at Dash
- 2 12-Volt Power Outlets at Dash
- Power Passenger Seat w/Power Footrest
- Automatic Generator Start System
- Radio w/Built-in GPS, Back-Up Camera & Mirror-Mounted Side Cameras

### GALLEY

- GE 1 cu.ft. Convection Microwave Oven w/Built-in Range Hood & Light
- 3-Burner, High-Output Cooktop w/Sealed Burners (36J, 40X, 42A, 42M, 42D)
- 3-Burner, High-Output Range w/Sealed Burners (40G)
- Adjustable Cabinet Shelves (Select Cabinets)

- Fan-Tastic® Power Roof Vent w/Wall Switch
- Flip-Up Counter Extension (36J)
- Dometic® 12.2 cu.ft. Residential-Style 4-Door Refrigerator w/Icemaker & Water Dispenser
- Galley Faucet w/Pullout Sprayer
- Dinette Base Cabinet with Free-Standing Chairs
- Solid-Surface Countertop w/Sink & Range Covers
- Under-Galley Shelving & Wastebasket
- Window Over Sink
- Solid-Surface Dinette Tabletop

### LIVING ROOM

- Sony® 32" LCD HDTV (32" Midship in 40G; 40" Midship in 40X, 42A, 36J & 42M)
- Sony® 5.1 Home Theater System w/Built-in AM/FM/DVD & Surround Sound Speakers
- Villa® Residential Seat Styling
- TV Antenna w/Signal Booster

### BEDROOM

- Sony® 32" LCD HDTV
- Slide-Out Features Overhead Cabinet
- Bedspread w/Décor Pillows
- Coffin Ceiling
- Remote Generator Start
- Queen Bed Air Mattress
- Rear Wardrobe w/Cedar Lining, Carpeted Floor & Wire Organizer
- Wardrobe Lighting

### BATHROOM

- A/C Venting
- Cabinet Toe Kicks
- Fan-Tastic® Power Roof Vent w/Wall Switch
- Glass Shower w/Skylight and Low Threshold
- Faucet
- Hardwood Bath Door/Trims
- Make-Up Lights (Some Models)
- Porcelain Toilet w/Water Saver
- Halogen Lighting Over Bathroom Sink

### SAFETY/CONVENIENCE (INTERIOR)

- Carbon Monoxide Detector/Alarm
- Energy Management System (EMS) w/Soft Start
- Fire Extinguisher
- Multiple Seatbelt Locations
- Propane Detector/Alarm
- Smoke Detector/Alarm
- Neutral Loss Protection Standard

### EXTERIOR THROUGHOUT

- 120V/12V AC/DC Converter
- 2,000-Watt Pure Sine Wave Inverter w/Remote
- Molded Fiberglass Roof
- 4-Point Automatic Levelers
- 50-Amp Service
- 8.0 KW Onan® Quiet Diesel Generator
- Manual Generator Slides
- Awning Rail/Drip Molding (Both Sides)
- Doorside Patio Receptacle
- DSS Auto-Locating Satellite Dish (Covered)
- Dual-Pane Windows w/Screens
- Fiberglass Front Quarter Panels
- Fiberglass Wheel Well Trims
- Full-Body Paint w/Color & Graphics - 5 Choices
- Weather Pro Power Awnings (Patio Awning Includes Wind Sensor)
- Patio Awning
- Fiberglass Front/Rear Caps w/High-Mounted Taillights

- Water Pump Switch (Multiple Locations)
- Exterior Entertainment Center w/Sony® 32" LCD HDTV and High-Output, Splashproof AM/FM/DVD Sound System
- Heat Pump in Bedroom A/C

### AUTOMOTIVE

- Aluminum Wheels
- Fog Lamps
- Mud Flaps
- Color Rear & Side Vision Camera System
- Remote Keyless Entry
- Windshield Wipers w/Wet Arm
- Underhood Utility Light
- Large One-Piece Bonded-in Windshield
- Heated Chrome Power Exterior Mirrors w/Turn Signals w/Sideview Cameras
- Diamond Shield Clear Front Protective Mask

### SAFETY/CONVENIENCE (EXTERIOR)

- 20' Sewer Hose
- ABS Brakes
- Automotive Safety Glass
- Daytime Running Lights
- Easy Sweep Flooring at Entry Step
- Entry Door w/Screen Door & Deadbolt Lock
- Four 6V/Deep-Cycle House Batteries
- Lighted Entry Assist Handle
- Power Entry Step
- Remote/Heated Rear-View Mirrors
- Toilet Tank San-T-Flush™ System
- Touch Sensor Tank Monitoring System
- Utility Compartment w/Exterior Shower
- Rear Side Marker Lights

### STORAGE

- Continuous One-Piece Compartment Bulb Seal
- Pass-Through Storage
- Side Swinging Luggage Doors
- Insulated Aluminum Luggage Doors w/Single Paddle Metal Latches & Corrosion-Resistant Steel Hinges
- Large Compartment Doors
- Lighted Luggage Compartments

## OPTIONS

### INTERIOR

- CSA Package (Canadian Specs)\*\*

### GALLEY

- 3-Burner Sealed Drop-In Range w/Oven (40X, 42M)
- GE 22 cu-ft Residential Refrigerator w/Two Additional Batteries & Additional Inverter

### LIVING ROOM

- Bedroom Fireplace (42D)
- Living Room Fireplace (42D)
- Villa Booth Facing Dinette
- U-Shaped Dinette/Sofa (36J, 40G, 40X, 42M, 42D)
- U-Shaped Dinette/Dual FS Recliners (40X)
- Expandable L-Sofa (40X)
- Sony® 32" LCD HDTV in Front Overhead
- Desk (40G)
- Satellite Radio (Subscription Required)

## BEDROOM

- Dresser/Vanity w/Second Sink (40G)
- Bunk Beds (42A)
- King Air Mattress
- Queen Bed with Memory Foam Mattress
- King Bed with Memory Foam Mattress

## EXTERIOR

- Solar Electric Panel
- 1st Full Bay 90" Slide Tray
- 1st Full Bay 36"/54" Slide Trays
- 2nd Full Bay 90" Slide Tray
- 2nd Full Bay 36"/54" Slide Trays
- Mobile DSS System
- 3rd Roof A/C (40G, 40X)
- Exterior "Pull Out" Grill & Kitchenette
- Window Awning Package

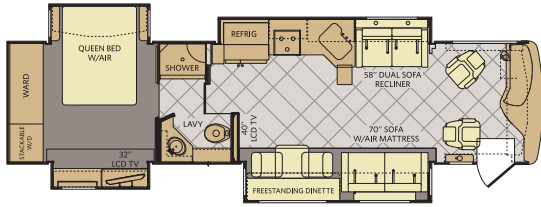
## FLEETWOOD ADVANTAGES

- Sony® 32" LCD HDTV in Living Room (40" in 36J, 42M, 42D, 40X & 42A), Sony® 32" LCD HDTV in Bedroom
- Sony® 5.1 Home Theater System w/Surround Sound
- Sony® In-Dash Stereo
- HDMI Electronic Components and HDMI Cables Throughout Coach
- TV & Home Theater Remote Control Operation
- Built-In, Standard or HDMI, Satellite Receiver AV Input Jack
- Single, Digital, LED Extend Retract Switch That Combines Five (5) Functions Including: Awnings, Step Well Cover & Slide-Out Functions, Into One (1) Easily-accessible Unit
- 50-Amp Energy Management System that monitors both legs of power
- 110AC Outlet in Dash Area
- Full-Wall Slide
- Vacu-Bond™ Walls w/Smooth High-Gloss Exterior Fiberglass
- Large One-Piece Bonded-in Windshield
- Pass-Through Storage
- Side Swinging Luggage Doors
- Deluxe Roller Bearing, Full Extension Drawer Guides
- 84" Interior Ceiling Height
- Power Bridge™ Construction (Fleetwood RV Exclusive)
- Liberty Chassis™ (42' Models Only)

\*\*CSA Standards may require substitution or deletion to achieve conformance

# FLOOR PLANS

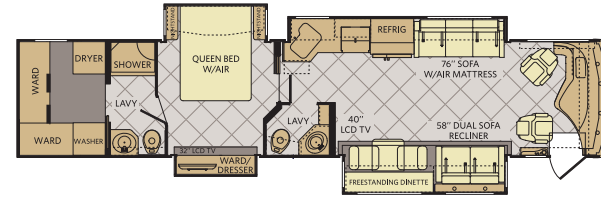
36J



INTERIOR STORAGE CAPACITY: 215 CU. FT.  
EXTERIOR STORAGE CAPACITY: 140 CU. FT.

Available options: 087, 144, 635, 830, 853, 854, 856

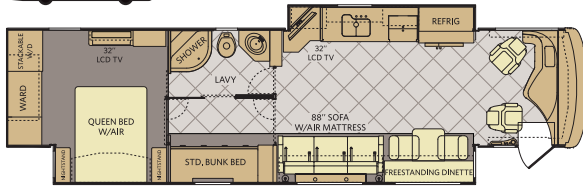
42A



INTERIOR STORAGE CAPACITY: 152 CU. FT.  
EXTERIOR STORAGE CAPACITY: 189 CU. FT.

Available options: 087, 144, 830, 853, 854, 856, 861

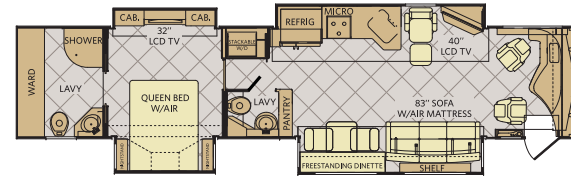
40G



INTERIOR STORAGE CAPACITY: 166 CU. FT.  
EXTERIOR STORAGE CAPACITY: 208 CU. FT.

Available options: 087, 144, 635, 830, 853, 854, 856, 867, 878

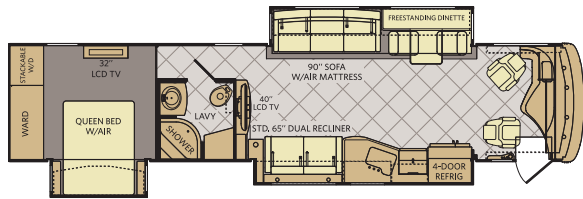
42D



INTERIOR STORAGE CAPACITY: 204 CU. FT.  
EXTERIOR STORAGE CAPACITY: 189 CU. FT.

Available options: 113, 139, 140, 144, 191, 635, 830, 853, 854, 856

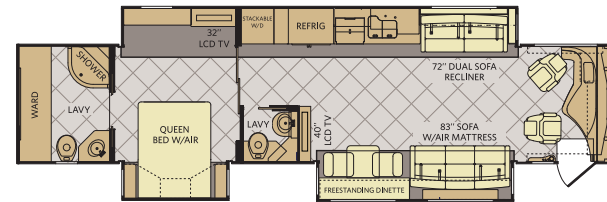
40X



INTERIOR STORAGE CAPACITY: 197 CU. FT.  
EXTERIOR STORAGE CAPACITY: 208 CU. FT.

Available options: 087, 113, 144, 191, 627, 635, 830, 853, 854, 856

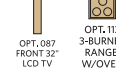
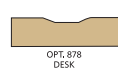
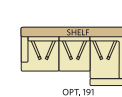
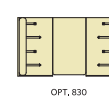
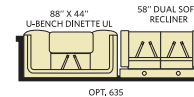
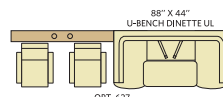
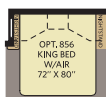
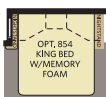
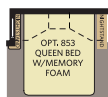
42M



INTERIOR STORAGE CAPACITY: 207 CU. FT.  
EXTERIOR STORAGE CAPACITY: 189 CU. FT.

Available options: 087, 144, 635, 830, 853, 854, 856

## FLOOR PLAN OPTIONS



# WEIGHTS & MEASUREMENTS

CHASSIS	POWER BRIDGE®			LIBERTY®		
	MODELS	36J	40G	40X	42A	42D
Wheelbase (inches)	228"	276"	276"	302"	302"	302"
GVWR (lbs) <sup>1</sup>	32,400	32,400	32,400	44,600	44,600	44,600
Front GAWR (lbs) <sup>2</sup>	12,400	12,400	12,400	14,600	14,600	14,600
Tag Axle GAWR	N/A	N/A	N/A	10,000	10,000	10,000
Rear GAWR (lbs) <sup>2</sup>	20,000	20,000	20,000	20,000	20,000	20,000
GCWR (lbs) <sup>3</sup>	42,400	42,400	42,400	54,600	54,600	54,600
Hitch Rating Weight (lbs) <sup>1</sup>	7,500	10,000	10,000	10,000	10,000	10,000
Tongue Weight (lbs) <sup>7</sup>	750	1,000	1,000	1,000	1,000	1,000
Fuel Capacity (gal)	100	100	100	150	150	150

## POWER BRIDGE CHASSIS (36'-40' MODELS)

**Model:** Freightliner® XCM Series  
**Engine:** Cummins® 8.3L ISC  
**Transmission:** Allison® 3000 MH 6-Speed  
w/Electronic Shifter

**Alternator:** Delco Remy 160 Amp  
**Torque:** 1,050 lb-ft  
**Horsepower:** 380HP

## LIBERTY CHASSIS (42' MODELS)

**Model:** Spartan®  
**Engine:** Cummins® 8.3L ISC  
**Transmission:** Allison® 3000 MH 6-Speed  
w/Electronic Shifter

**Alternator:** Leece Neville 170 Amp  
**Torque:** 1,050 lb-ft  
**Horsepower:** 380HP

## DIMENSIONS & CAPACITIES

MODELS	36J	40G	40X	42A	42D	42M
Overall Length (inches) <sup>4</sup>	37' 7.5"	41' 7.5"	41' 7.5"	43' 4"	43' 4"	43' 4"
Overall Height (with A/C)	12' 10"	12' 10"	12' 10"	12' 10"	12' 10"	12' 10"
Overall Width (maximum) <sup>5,6</sup>	102"	102"	102"	102"	102"	102"
Interior Height (maximum)	84"	84"	84"	84"	84"	84"
Interior Width (maximum)	96"	96"	96"	96"	96"	96"
Fresh Water Holding Tank (gal)	100	100	100	100	100	100
Grey Water Holding Tank (gal)	75	75	75	60	60	60
Black Water Holding Tank (gal)	50	50	50	40	40	40
Appliance Propane Tank (gal) (WC) <sup>7</sup>	38.7	38.7	38.7	28.2	28.2	28.2
Water Heater Tank (gal)	10	10	10	10	10	10

### Liquid Weight Reference:

Water (gal) = (8.3 lbs/3.8 kgs) Fuel (gal) = (6.1 lbs/2.8 kgs) Propane (gal) = (4.2 lbs/1.9 kgs)

### Metric Conversion:

Multiply pounds x 0.453 to obtain kilograms. Multiply gallons x 3.785 to obtain liters.

Multiply liters x 61 to obtain cubic inches.

## DISCLAIMERS

- GVWR (Gross Vehicle Weight Rating) is the maximum permissible weight of this fully loaded motor home. The GVWR is equal to or greater than the sum of the (UVW) unloaded vehicle weight plus the (OCCC) occupant cargo-carrying capacity.<sup>7</sup>
  - GAWR (Gross Axle Weight Rating) is the maximum permissible loaded weight a specific axle is designed to carry.
  - GCWR (Gross Combined Weight Rating) is the value specified by the motor home manufacturer as the maximum allowable loaded weight of this motor home with its towed vehicle. Towing and braking capacities may be different. Refer to Fleetwood and chassis manufacturer's manuals for complete information.
  - Length measured from front bumper to rear bumper (excludes accessories).
  - Excludes safety equipment and awnings.
  - Motor homes feature a body width over 96" which will restrict your access to certain roads. Before purchasing, you should research any state and/or province road laws which may affect your usage.
  - Tank manufacturer's listed water capacity (WC). Actual propane capacity is 80% of water listing as required by the safety code.
- † The chassis manufacturer recommends the installation of a supplemental brake control system to activate the brakes on the vehicle or trailer you are towing. Hitch receiver ratings expressed are maximum for the hitch receiver installed and may require the purchase of additional equipment that is dependent on the weight of the towed load. Consult with hitch receiver manufacturer for further information.
- \* UVW and OCCC are found on the label containing the federal certification tag in each RV.

**IMPORTANT—PLEASE READ:** Product information, photography and illustrations included in this publication were as accurate as possible at the time of printing. For further product information and changes, please visit our website at [www.fleetwoodrv.com](http://www.fleetwoodrv.com) or contact your local Fleetwood RV dealer. Prices, materials, design and specifications are subject to change without notice. All weights, fuel, liquid capacities and dimensions are approximate. Fleetwood RV has designed its recreational vehicles to provide a variety of uses for its customers. Each vehicle features optimal seating, sleeping, storage and fluid capacities. The user is responsible for selecting the proper combination of loads (i.e., occupants, equipment, fluids, cargo, etc.) to ensure that the vehicle's capacities are not exceeded.

## WHY FLEETWOOD RV?



### Quality

There's no cutting corners. Skilled craftsmen build every Fleetwood RV for maximum durability and longevity.



### Trust

More people trust Fleetwood RV. After all, we've spent over 60 years perfecting RVs, earning the loyalty of generations of RVers.



### Passion

We're truly passionate about the RV lifestyle. Fleetwood RV was founded by RV enthusiasts, and that tradition continues today.



### Safety

You've got precious cargo. So we've engineered dozens of innovative safety features into our motor homes to give you more peace of mind.



### Service

Help is nearby with 24/7 emergency roadside assistance through **Coach-Net**.<sup>\*\*</sup> And when you need an upgrade or repair, you'll find Fleetwood RV dealers all across North America ready to assist you.



### Warranty

Exclusive RV ownercare warranty. See your Fleetwood RV dealer for details.

<sup>\*</sup>All 2012 Fleetwood RV motor homes include a 1-year membership to Coach-Net.

<sup>\*\*</sup>For complete info, see your Fleetwood RV dealer.



### RV OWNERCARE<sup>\*\*</sup>

Limited one-year/15,000-mile coach warranty and three-year/45,000-mile structural warranty, whichever occurs first, and it is fully transferable for the first 12 months. RV OWNERCARE is one of the RV industry's most comprehensive programs and includes systems, appliances, components and construction, with no deductible and no service charge. RV OWNERCARE coverage is provided by a company that will be around in the future to service your needs. See your nearest Fleetwood RV dealer for a full explanation of benefits and restrictions.

### CONTACT US

To locate a dealer near you, visit our website at [www.fleetwoodrv.com](http://www.fleetwoodrv.com) or call 1-800-322-8216. We can also be contacted at Fleetwood RV Customer Relations, P.O. Box 1007, Decatur, IN 46733.

### FLEETWOOD RV MOTOR HOME CLUBS

As a Fleetwood RV owner, you're invited to become a member of several Fleetwood RV motor home clubs. Becoming a club member is the perfect way to meet other Fleetwood owners who love to travel across America and share in the RV lifestyle. Visit our website at [www.fleetwoodrv.com/owners\\_clubs](http://www.fleetwoodrv.com/owners_clubs) to learn more and join the fun.



YOUR LOCAL FLEETWOOD RV DEALER IS: